



INNOVIA
FOUNDATION

20
19

Annual Report

MISSION

To ignite generosity
that transforms lives
and communities.

VISION

Vibrant and sustainable
communities where
every person has
the opportunity
to thrive.

45

years of
service

\$81m+

in total grants and
scholarships awarded
since our inception

\$137m+

in assets

INNOVIA FOUNDATION TEAM

Shelly O'Quinn
Chief Executive Officer

Lauren Autrey
Chief Financial Officer

Mason Burley
Director of Research and
Community Impact

Connie Emry
Administrative Assistant

Alicia Heiser
Grants Program Associate

Collette Jarvelin
Donor Services Specialist

Kathy Johnson
Executive Assistant

Meg Lindsay
Education Program Director

Aaron McMurray
Chief Strategy Officer

Lauren Nissen
Philanthropic Engagement
Manager

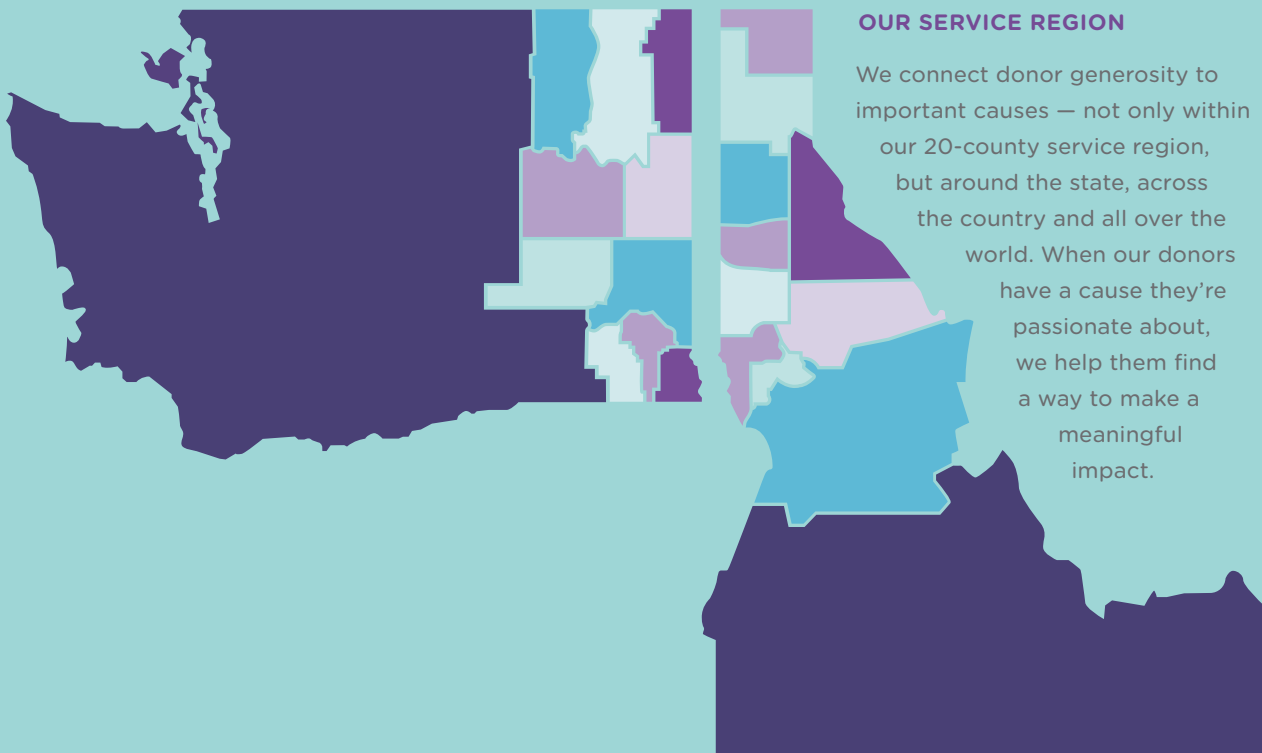
Alex Panagotacos
Spokane County Census
Committee Coordinator

Molly Sanchez
Director of Grants and
Community Engagement

Amy Voeller
Opening Books, Opening
Doors Program Manager

PJ Watters
Director of Gift Planning

Lou Wilmot
Administrative Assistant



OUR SERVICE REGION

We connect donor generosity to important causes — not only within our 20-county service region, but around the state, across the country and all over the world. When our donors have a cause they're passionate about, we help them find a way to make a meaningful impact.



For over 45 years, Innovia Foundation has served the people and communities of Eastern Washington and North Idaho, ensuring that every person has the opportunity to thrive. As we reflect on our collective service over the past year, we are grateful for the time, talents and resources of the vast network of partnerships igniting generosity and driving community transformation across our region.

Throughout the 2019 Annual Report for your community foundation, you will see heartfelt stories that demonstrate how our shared values of generosity, innovation, collaboration and inclusiveness are significantly changing people's lives and strengthening communities. We are humbled and inspired by the caring, commitment and compassion of all of you — our many donors, volunteers and community partners who make all of this possible.

Thank you for entrusting Innovia Foundation as a steward of your generosity. This past year alone, we received nearly \$10 million in contributions, increasing Foundation assets to over \$137 million. Your gifts generated over \$6.4 million in grants and scholarships to organizations and individuals in every county in our region, and beyond. While these numbers are exciting, what truly matters are the stories of transformed lives and community impact resulting from this generosity.

Innovia Foundation recently completed a new strategic plan to clarify our mission, vision and values, as well as to amplify our work throughout the region. The process included broad participation from staff, board members and volunteers working together to envision the positive difference Innovia Foundation could make in every community. By igniting generosity that engages communities in addressing the most pressing challenges and greatest opportunities in our region, together, we can improve the lives of all.

As the year draws to a close, we thank you for joining us in building a brighter future for Eastern Washington and North Idaho. If you would like to collaborate with Innovia Foundation, our board and staff would be honored to meet with you to explore opportunities to make our world a better place.

Meg Miller
Board President

Shelly O'Quinn
CEO

BOARD OFFICERS FISCAL YEAR 2020

PRESIDENT
Meg Miller

VICE PRESIDENT
Robert A. Blume

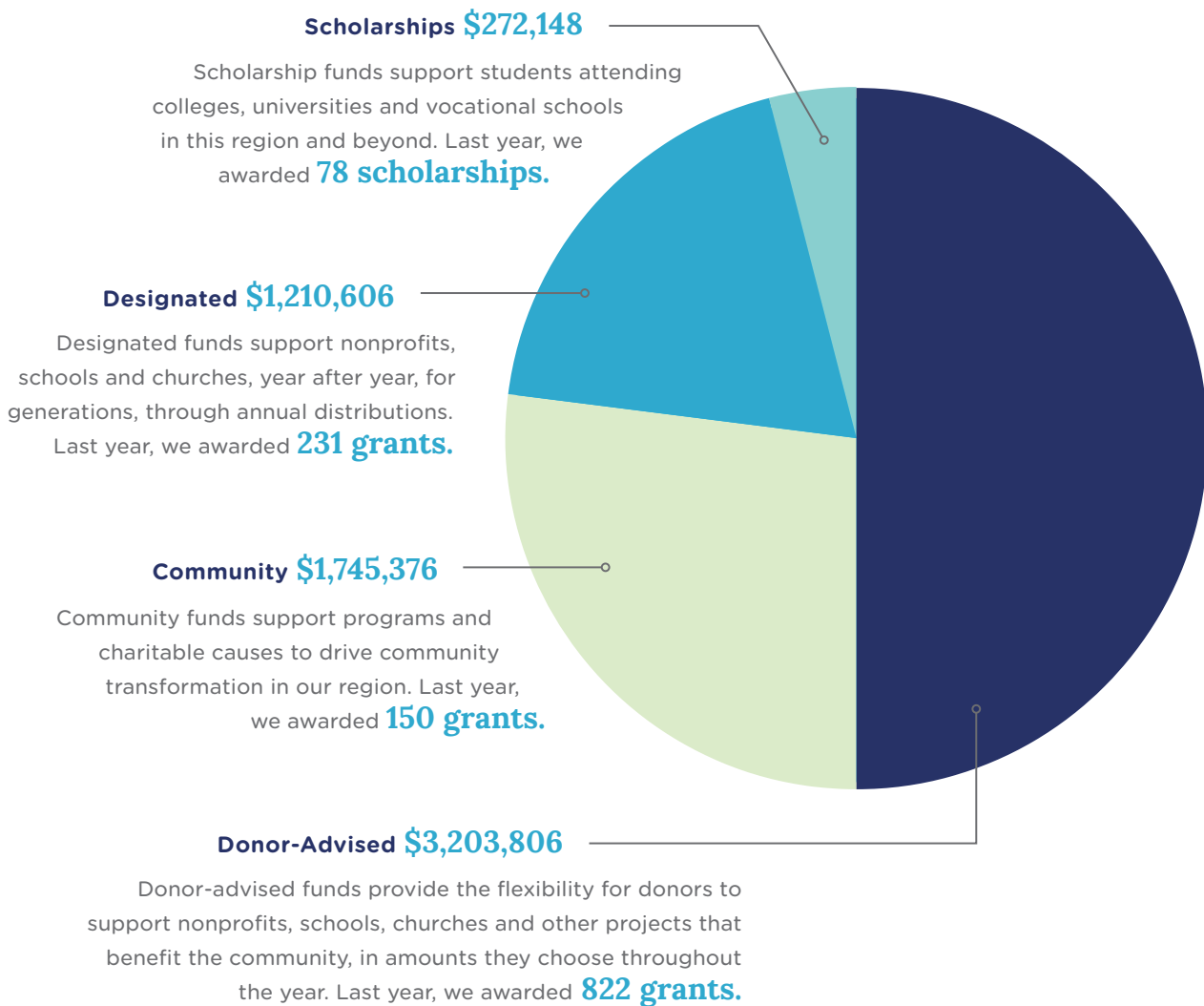
SECRETARY-
TREASURER
Geraldine Lewis

DIRECTORS FISCAL YEAR 2020

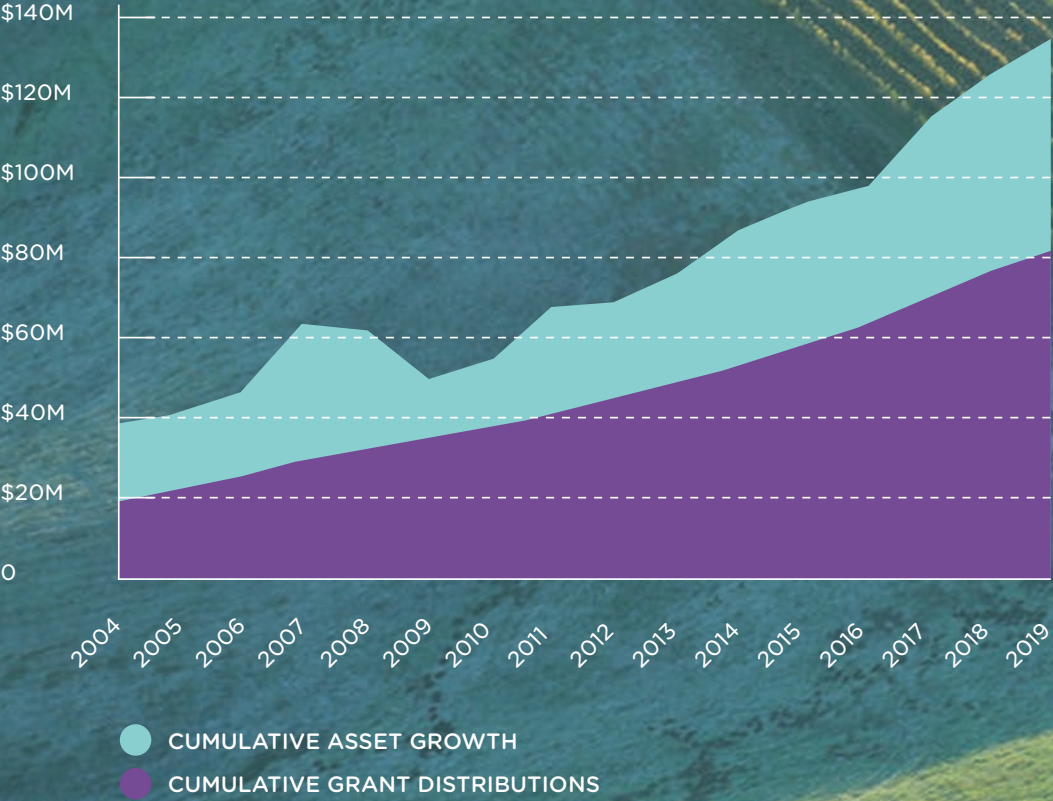
Janice Baldwin
Robert P. Bishopp
Sandi Bloem
Carla Cicero
Robert Larson
Tyler Lafferty
Rueben Mayes
Betsy Wilkerson
Carol Wilson

This year,
we awarded an
unprecedented 1,281 grants
totaling \$6,431,936.

1,281 grants
distributed



Cumulative Assets and Grant Distributions



Community Leadership

Realizing our vision for vibrant and sustainable communities where every person thrives requires dedication to community leadership.

Every community has unique opportunities and challenges. We know that complex problems are best approached through honest and committed partnerships with community members from diverse backgrounds and experiences. Innovia provides leadership to catalyze transformative change in our region through civic engagement, research and advocacy. As a funder and convener, we are dedicated to learning about, and investing in, collaborative, community-based efforts.

Civic Leadership Fund

Innovia Foundation's Board of Directors established our first Civic Leadership Fund in 2017 to advance work on issues critical to the economic vitality and civic health of our region. The Civic Leadership Fund supports cutting edge research, community partnerships and convenings, and strategic proactive grantmaking to have measurable impact on issues in our community.

Community member contributions of any size are encouraged. Donors can also establish named Civic Leadership Funds. These funds recognize that the needs and opportunities in our region evolve over time. Through innovative partnerships and informed solutions, together we can advance change in our communities.

Thank you to our co-funders who have partnered with us on our community initiatives this year.

TOTAL CO-FUNDING IN FY2019: \$467,667

- Avista Corporation
- Avista Foundation
- Ballmer Group
- Bouten Construction
- Columbia Bank
- Empire Health Foundation
- Idaho Community Foundation
- Lewis-Clark Valley Healthcare Foundation
- Mountain West Bank
- Murdock Charitable Trust
- Numerica Credit Union
- Premera Social Impact





This Book

Children who are proficient and passionate readers by third grade are five times more likely to be college or career ready. *Opening Books, Opening Doors* works to ensure young readers in Coeur d'Alene have books to read and someone to read with, so all students are reading at grade level by third grade. *This Book*, a community action campaign launched this year, encourages everyone to help build a stronger community by taking time to read to a child or donate a book.




Community Forums and Data Walks

This fall, Innovia hosted forums with more than 300 community members in Moscow, Pullman, Lewiston, Clarkston, Grangeville and Orofino to hear about the greatest needs and opportunities in these areas. The forums featured 'data walks' to share results from a community survey that was sent to a representative sample of over 8,000 households. Results highlighted valuable information that reflect the range of needs and opportunities in each community. Feedback, personal stories and perspectives from these forums will be used by multiple organizations to identify trends, fund community-identified priorities and improve quality of life throughout the region.

Jumpstart

Innovia supported eleven nonprofits to update their fundraising strategy through the Network for Good Jumpstart Program. World Relief Spokane, one Jumpstart nonprofit, has resettled over 10,000 refugees in Spokane over the past 25 years. When they experienced a decrease in funding, Jumpstart helped ignite their fundraising efforts, significantly increasing contributions. "We experienced unprecedented success. We tripled our revenue and raised more in four months of 2018 than we raised in all of the prior fiscal year. That will go a long way to helping refugees settle in Spokane," says World Relief Church and Community Engagement Manager Bob Savage.





Investing in Rural Communities

Vibrant and sustainable rural communities are critical to the overall economic and social wellbeing of our region.

Innovia Foundation's 20-county service area stretches across the breathtaking landscapes and rugged beauty of Eastern Washington and North Idaho. From Republic, Washington to Grangeville, Idaho, our treasured rural communities hold history and are a significant part of our region. We are committed to supporting rural revitalization, igniting generosity and inspiring community engagement. This commitment starts with being present and engaged in local rural communities.

204+ days
16,500+ miles

Last year, our team logged over 204 days and over 16,500 miles engaging with citizens and community leaders in rural towns across our region.

Thanks to the generosity of Innovia Foundation's donors, we are intentionally investing in our rural communities, with nearly \$3 million in rural grantmaking in the past two years alone.



Harrington Town Square

The Town of Harrington, Washington is home to generous people who care about their neighbors and their community. Last year, Innovia awarded a \$30,000 challenge grant to the community to build a town square. Innovia will match every \$1 the community contributes to the Harrington Town Square project, up to \$30,000. The community quickly came together to secure matching gifts and are well on their way to meeting the challenge. The Harrington Town Square will soon replace an empty downtown lot with a place for community gatherings, connections and events.

Rural Healthcare Reporter

Our rural communities experience challenges accessing high quality and affordable healthcare, which often go unheard. A \$10,000 grant from Innovia helped *The Spokesman-Review* meet a local funding challenge by Report for America, a national service program that stations reporters in local newsrooms to write about under-covered issues and communities. Funding helped hire a rural healthcare reporter at *The Spokesman* to ensure coverage of important stories. The partnership between Innovia Foundation, *The Spokesman-Review* and Report for America will give voice to the stories that can lead to improvements in rural healthcare.

North Palouse Leadership Initiative

Residents from southeast Spokane County and northern Whitman County came together this summer to create "Palouse Pride." The art project was designed to create a stronger connection between the two counties and demonstrate how their sense of community transcends county lines. The project was created by the Northern Palouse Rural Leadership Development Cohort with funding from Innovia. The community mural painting project launched during the Southeast Spokane County Fair in Rockford. The mural design was then incorporated into community flags displayed in highly-visible locations in each community. The flags are an important reminder that even though residents may live in different counties, they all are part of a larger community inspired by their Palouse Pride.

Impact Areas

We work to improve access to education, promote health and wellbeing, support arts and culture, create economic opportunity and enhance quality of life.



Arts and culture

142 GRANTS TOTALING **\$529,529** IN FY2019

Creating vibrant and accessible cultural and enrichment experiences for all

From rural community theaters to large symphonies and orchestras, Innovia Foundation partners with nonprofit organizations that support the arts as economic drivers, educational assets and bridges between cultures.



Health and wellbeing

315 GRANTS TOTALING **\$2,032,628** IN FY2019

Helping people live healthier, happier lives

Conditions in the places where people live, learn, work and play affect a wide range of health risks and outcomes. Innovia Foundation partners with nonprofit organizations to improve these conditions, known as social determinants of health, and promote wellbeing for all.



Economic opportunity

17 GRANTS TOTALING **\$105,167** IN FY2019

Catalyzing innovation and collaboration to support and strengthen our economy

Whether it's providing job skills training for refugees or developing a commercial kitchen for local entrepreneurs, Innovia Foundation works with nonprofit partners to build prosperity for local families, businesses and communities.



Quality of life

466 GRANTS TOTALING **\$2,200,235** IN FY2019

Protecting and improving what makes our part of the world special

Innovia Foundation recognizes that land conservation, compassion for our furry friends and well-planned community spaces add so much to the quality of life we enjoy in the Inland Northwest. We love living in our region and are committed to protecting and preserving what makes our part of the world so special.



Education and youth development

341 GRANTS TOTALING **\$1,564,377** IN FY2019

Promoting success through education

Innovia Foundation supports nonprofit organizations providing access to learning opportunities for all ages — from early childhood reading programs to college campus site visits for first generation college students.



Impact of Fund Types

Innovia Foundation offers donors different fund types, each with unique characteristics and opportunities, that leave a lasting impact.

Designated Funds

231 GRANTS TOTALING **\$1,210,606**
TO NONPROFIT ORGANIZATIONS IN FY2019

New Designated Funds in FY2019

- Arc of Spokane Fund
- Art & Soul Foundation
- Bloomsday Fund
- Brandon Livingston Fields Memorial Fund
- Center Pointe Legacy Fund fbo Arc of Spokane
- Donna J. Johnson Endowment Fund
- Friends of Diamond Lake Endowment
- G-4 Scholarship Fund
- Garvin Family Fund
- Gloria Stewart Cooper Memorial Scholarship Fund
- Green Family Foundation
- Heather's House Cancer Services Fund
- Helen Bonser Outreach Foundation Scholarship Fund
- James & Nancy Benthin Fund
- Medical Lake Scholarship for Excellence in Music Fund
- P.H. von Lintel Environmental Science Foundation
- Palouse Discovery Science Center Fund
- Skils'kin Endowment Fund
- Spokane HOPE Endowment Fund
- Sunlight Investigative Foundation Fund
- Tiger Drama Family Scholarship Fund
- VOA Hope Through Education Scholarship Fund
- Washington Idaho Symphony Endowment Fund
- YWCA of Spokane Fund

Community Funds

150 GRANTS TOTALING **\$1,745,376**
TO NONPROFIT ORGANIZATIONS IN FY2019

New Community Funds in FY2019

- Economic Opportunity Impact Fund
- Education and Youth Development Fund
- Harrington Town Square Community Fund
- Premera Social Impact Fund
- Thomas B. Baker and James T. Baker Fund for Children & Youth
- Thomas B. Baker and James T. Baker Fund for People with Disabilities

Donor-Advised Funds

822 GRANTS TOTALING **\$3,203,806**
TO NONPROFIT ORGANIZATIONS IN FY2019

New Donor-Advised Funds in FY2019

- 2018 Fritz & Jeanie Wolff Fund
- Bob & Meg Bishopp Donor-Advised Fund
- Dan & Linda Green Donor-Advised Fund
- Dean & Cindy Haagenson Donor-Advised Fund
- G & P Family Charitable Fund
- Georgianne & Christopher F. Jensen Donor-Advised Fund
- Grant and Jeff Livingston Fund
- Harriet Lynn Johnson Fund
- John D. Miskulin Donor-Advised Fund
- JR & Carole Walker Fund
- Laurie Vessey Fund for Cleft Lip & Palate
- Lee & Doni Walker Fund
- Mark & Kathleen Dresback Fund
- Matthews Mahoney Donor-Advised Fund
- Spokane Valley Farmers Market Fund
- Stonerose Interpretive Center Fund
- Tzedakah Fund

Scholarship Funds

78 SCHOLARSHIPS
TOTALING **\$272,148**
IN GRANTS FOR
STUDENTS IN FY2019

New Scholarship Funds in FY2019

- Diamond Lake Ranch Scholarship Fund
- Rika Ream Environmental Scholarship Fund

Administrative Funds

THESE FUNDS PROVIDE
ADMINISTRATIVE SUPPORT FOR
SPECIAL PROJECTS
IN THE COMMUNITY

New Administrative Funds in FY2019

- Lewis-Clark Valley Healthcare Initiative
- Robert Wood Johnson Fund

For a full list of our funds, visit innovia.org/ways-to-give

With the generosity of our donors and partners, we strengthen communities across Eastern Washington, North Idaho and beyond.

Beautiful Downtown Lewiston

ECONOMIC OPPORTUNITY GRANT

Creating a vital, inviting downtown district in Lewiston, which promotes quality business, cultural and community growth, is the mission of Beautiful Downtown Lewiston Revitalization Corporation (BDL). Through strategic partnerships, BDL provides free public programming to improve the region's arts and cultural experiences — Downtown Artwalk, Sound Downtown summer concert series and the Barge in Music Festival. A \$5,000 Community Strategies grant helped fund a capacity analysis, strategic plan development and implementation to set the stage for BDL's success, particularly with the recent adoption of a Downtown Master Plan.

Chewelah Performing and Cultural Arts

ARTS & CULTURE GRANT

For 30 years, performing arts in Chewelah have been limited to an old grade school gym and a high school cafeteria. Passionate artists, including Park Avenue Players, have needed a new home. A \$30,000 grant from Innovia is helping Chewelah Performing and Cultural Arts create a performing arts facility for Ferry, Pend Oreille and Stevens counties. The Center will house school theater productions, art shows and other community events. The new downtown venue will allow for larger casts, more technical productions, updated seating and air conditioning. Serving as a community hub, the Center will drive local business opportunities and inspire regional artists.

Art & Soul Foundation

AGENCY ENDOWMENT

Ken Spiering, an art teacher at Freeman High School, has created numerous landmarks including the world's largest Radio Flyer wagon in Riverfront Spokane. In 2017, Ken founded the Art & Soul Foundation, a nonprofit providing scholarships to Freeman High School students pursuing careers in the arts, including graphic design, architecture, traditional art and more. In 2018, Art & Soul established an endowment at Innovia to support, expand and sustain funding to provide scholarships. Ken Spiering says, "Our dream is to fund scholarships for graduating seniors in art from every school in Spokane County, as well as awards to teachers for art education in their classroom."



Skills'kin

AGENCY ENDOWMENT

Skills'kin, based in Spokane, enriches the quality of life for adults with disabilities. In 2018, Skills'kin joined more than 100 nonprofit organizations that have established an agency fund at Innovia. This partnership helps build visibility for the valuable work they do for the community. "Partnering with Innovia provides us a broadly diversified investment strategy with a stable return on our invested funds that we could not achieve on our own," said Brian Behler, CEO of Skills'kin. "We also wanted to have a better connection to our community and have another avenue to share out the vital services we are providing for our adults with disabilities."



Washington Trust Bank

DONOR-ADVISED FUND

Washington Trust Bank, a founding banking partner to the community foundation, established its first donor-advised fund in 2001. They have continued to partner with Innovia to grant over \$2.8 million to charitable organizations throughout the region. Rather than operating a separate foundation on their own, Washington Trust Bank chose to work with Innovia to administer and enhance the impact of their charitable giving. This has allowed them to stay focused on banking services. This year alone, the Washington Trust Bank Endowment Fund recommended \$275,000 in grants to charitable organizations throughout the region.





Helen Bonser Outreach Foundation Scholarship Fund

AGENCY SCHOLARSHIP

Helen Bonser helped establish the first Spokane Pride March in 1992. Now, 28 years later, the parade has grown to nearly 8,000 participants each year. Helen also helped start the Spokane Chapter of PFLAG, a support group for LGBTQ+ community members and allies, and was a founding member of Inland Northwest Business Alliance, the region's LGBTQ+ chamber. The Outreach Foundation started an endowment at Innovia to provide scholarships for students to honor Helen's legacy and the impact she has had on changing the culture of Spokane. The Helen Bonser Outreach Foundation Scholarship Fund will ensure sustained support for students and business professionals looking to advance their careers through leadership programs and continuing education.



Laurie Vessey Fund for Cleft Lip and Palate

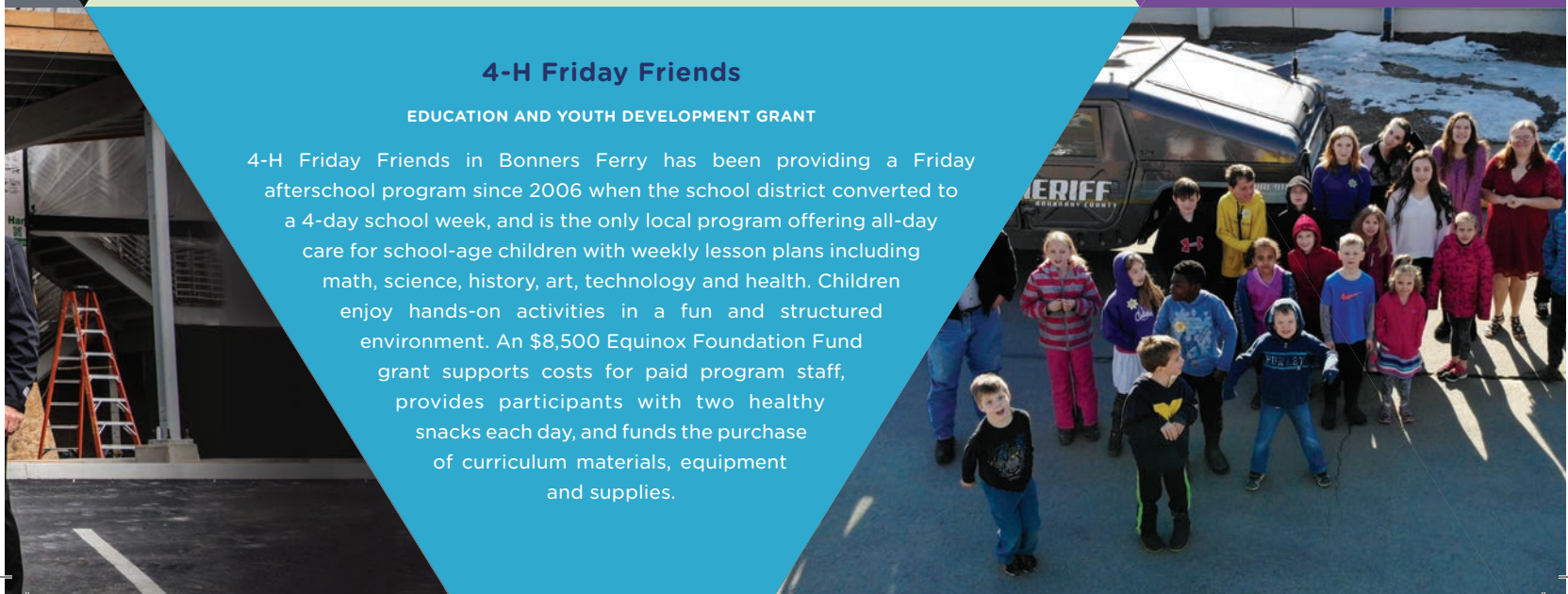
DONOR-ADVISED FUND

The Laurie Vessey Fund for Cleft Lip and Palate was inspired by Laurie Vessey, a nurse and Team Coordinator for the Inland Empire Maxillofacial Team. Laurie spent more than 25 years working with children born with cleft lip and palate. She has blessed countless families during a time of emotional and financial struggle. When Laurie announced her retirement in 2018, Natalie Chally, Rebecca Danon and Eden White, three Spokane-area moms of children born with cleft lip and palate, established the Laurie Vessey Fund for Cleft Lip and Palate. They invited others to join them to 'pay it forward' by supporting a fund that benefits other families facing this challenging time in their lives.

4-H Friday Friends

EDUCATION AND YOUTH DEVELOPMENT GRANT

4-H Friday Friends in Bonners Ferry has been providing a Friday afterschool program since 2006 when the school district converted to a 4-day school week, and is the only local program offering all-day care for school-age children with weekly lesson plans including math, science, history, art, technology and health. Children enjoy hands-on activities in a fun and structured environment. An \$8,500 Equinox Foundation Fund grant supports costs for paid program staff, provides participants with two healthy snacks each day, and funds the purchase of curriculum materials, equipment and supplies.





YMCA of the Inland Northwest

HEALTH AND WELLBEING GRANT

Many Spokane County residents are challenged to achieve healthy lifestyle habits due to poverty, chronic conditions, inadequate housing and lack of transportation.

A \$27,900 grant from Innovia to the YMCA of the Inland Northwest is funding the Pathways to Wellness program, a YMCA collaboration with CHAS Health. During the eight-week program, patients work with lifestyle coaches, healthcare providers and dietitians, who assist participants to address social determinants of health, such as housing and food insecurities. This program is life changing for many graduates, providing the tools to help build a stronger and healthier future.



Friends of Diamond Lake Endowment

DESIGNATED FUND

When Steve and Susan Brown set up an endowment to help protect Diamond Lake's environmental sustainability, they chose Innovia because of a positive experience they had when the Newport-Priest River Rotary established a fund at the Foundation. The Browns provided the initial financial support to start this new endowment, then gifted the fund to the Friends of Diamond Lake. "My father's aunt and uncle built our Diamond Lake cabin in 1951. I have been coming to the lake my entire life and our grandkids are fifth generation who have been enjoying the lake, as well. I want to ensure the pristine beauty of the lake continues for generations," said Steve.



Town of Waverly

QUALITY OF LIFE GRANT

Established in 1904, the Prairie View Schoolhouse is a historic landmark for the Town of Waverly. Innovia awarded \$20,900 to the Town of Waverly to assist with the restoration of the one-room schoolhouse to become a community center.

The grant will help repair the schoolhouse's interior, including new paint, insulation, trim and teaching stage. In addition to preserving an important piece of Waverly's heritage, the restoration project will create space for community gatherings and educational events, including lectures, workshops, and art and cooking classes.

Fiscal Year 2019 Financials*

Consolidated Investment Fund

Innovia Foundation's endowed assets are pooled in a portfolio specifically designed to meet the standards set forth in the Foundation's Investment Policy Statement. The asset allocation, investment policy and performance of the pooled endowment are monitored on a monthly basis by the Board of Directors, Investment Committee, professional staff and the Foundation's external investment consultant.

Investment Objective

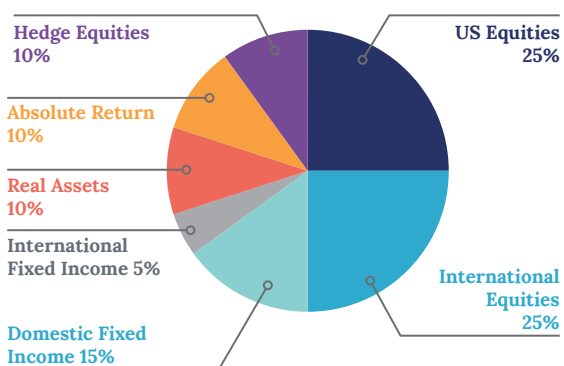
The Consolidated Investment Fund has a long-term outlook. It is structured with the objective of achieving a total return in excess of the targeted spending policy, including inflation. The guiding philosophy of the Consolidated Investments Fund's management is to promote the prudent stewardship of funds entrusted to Innovia Foundation to drive community transformation in the region we serve. The Consolidated Investment Fund is broadly diversified across asset classes and investment styles in order to enhance investment results and minimize risk.

Consolidated Fund Performance

as of June 30, 2019

One Year	4.40 %
Three Year	8.00 %
Seven Year	7.10 %
10 Year	8.00 %

Targeted Asset Allocation



Selected Financial Information

As of June 30, 2019

Total assets	\$ 137,842,509
Total liabilities including non-profit agency funds	\$ 20,484,680
Total net assets	\$ 117,357,829
Revenue and support	
Contributions	\$ 9,807,155
Other support	4,128,300
Total revenue	\$ 13,935,455
Expenses	
Grants and program expenditures	\$ 8,985,507
Supporting services:	
Administrative	\$ 786,990
Development	137,659
Total supporting services	924,649
Total expenses	9,910,156
Change in net assets	\$ 4,025,299
Net assets - Beginning of year	113,332,530
Net assets - End of year	\$ 117,357,829

* These financial statement amounts include the consolidated financial position and results of operations of Innovia Foundation and its three supporting organizations.

Legal Counsel: Peter A. Witherspoon

Independent Auditor: Eide Bailly LLP

Fiscal Year 2019 Board / Advisory Committees

At Innovia Foundation, our board and advisory committee members lend their extraordinary expertise and talent to help us improve the quality of life throughout the Inland Northwest. These individuals volunteer countless hours to help fulfill our mission to ignite generosity that transforms lives and communities.

OFFICERS

Robert P. Bishopp
President

Meg Miller
Vice President

Robert A. Blume
Secretary-Treasurer

DIRECTORS

Janice Baldwin

Shelley Bennett

Michael J. Bibin

Sandi Bloem

Carla Cicero

Robert A. Larson

Geraldine Lewis

Jennifer West

Betsy Wilkerson

Carol Wilson

BOARD DEVELOPMENT

Carla Cicero

Chair

Janice Baldwin

Robert P. Bishopp

Bill Bouten

Jennifer West

Carol Wilson

Bill Simer

Advisory Member

FINANCE COMMITTEE

Carla Cicero

Chair

Meg Miller

Vice Chair

Brenda Bookholtz

Robert M. "Bob" Cole, Jr.

Carmel Minogue

Chandra Schumacher

Mike Waite

Rick Wilhite

GIFT PLANNING COMMITTEE

Sandi Bloem

Chair

Joe Dinnison

Vice Chair

Greg Bever

K. Duane Brelsford

Candace Godwin

Robert A. Larson

Doug Mattoon

Patricia McRae

Marvin Reguindin

Stephanie R. Taylor

Chud E. Wendle

Jennifer West

GRANTS COMMITTEE

Carol Wilson

Chair

Janice Baldwin

Vice Chair

Terrie Ashby-Scott

Ben Cabildo

Susan Cerutti-Jensen

Gabriel Cruden

Karl Dye

Lisa Heath

Scott Hutsell

Keith Kelley

Paul Kimmell

Stephanie Schweitzer

Betsy Wilkerson

COLUMBIA COUNTY CHILDREN'S FUND ADVISORY COMMITTEE

Jennifer Ashlock

Melissa Jensen

Ashley Kilts

NORTH IDAHO PARTNERSHIP COUNCIL

Teri Farr

Barbara Jackson

Carol Julian

Geraldine Lewis

Michele Magnuson

Matt Mire

Helen Muffly

Rhonda Seagraves

Jennifer Stovern

PULLMAN-PALOUSE REGIONAL PARTNERSHIP COUNCIL

Francis Benjamin

Paul Kimmell

Vicki Leeper

Robin Fahle Ohlgren

Peady Schwabe

Mike Waite

Donna Woolston

INVESTMENT COMMITTEE

Rob Blume

Chair

Michael J. Bibin

Vice Chair

Eric F. Green

Kevin Grady

Houston Scrudder

Garry Shea

Marvin Soehren

Jan Tymesen

SCHOLARSHIP COMMITTEES

Scholarship committee volunteers are an indispensable part of Innovia Foundation's scholarship programs. They carefully review applications, taking into consideration a wide variety of criteria that may include financial considerations, academic achievement, courage in overcoming hardship, community service, drive and commitment. More than 100 volunteers are involved in the scholarship process. Each ensures scholarships are awarded in a manner that is fair and consistent with the wishes of the scholarship fund donors.

THANK YOU TO OUR ANNUAL REPORT SPONSORS



DONATE OR LEARN HOW TO PARTNER WITH US

innovia.org • info@innovia.org • 509-624-2606 • [f](#)

421 W Riverside Ave | Suite 606 | Spokane, WA 99201