



INNOVIA
FOUNDATION

2020

AMBASSADOR TOOLKIT

WELCOME TO THE TEAM.



FROM OUR CEO

Welcome and thank you for your partnership and commitment to the Foundation. Volunteers are the backbone of our organization, giving thousands of hours each year to support our mission.

In this handbook you'll find all the information you need to learn about the Foundation and resources to equip you as an ambassador in your community.

I look forward to seeing what we can accomplish for our region because together, we can do so much more.

MISSION

To ignite generosity that transforms lives and communities.

VISION

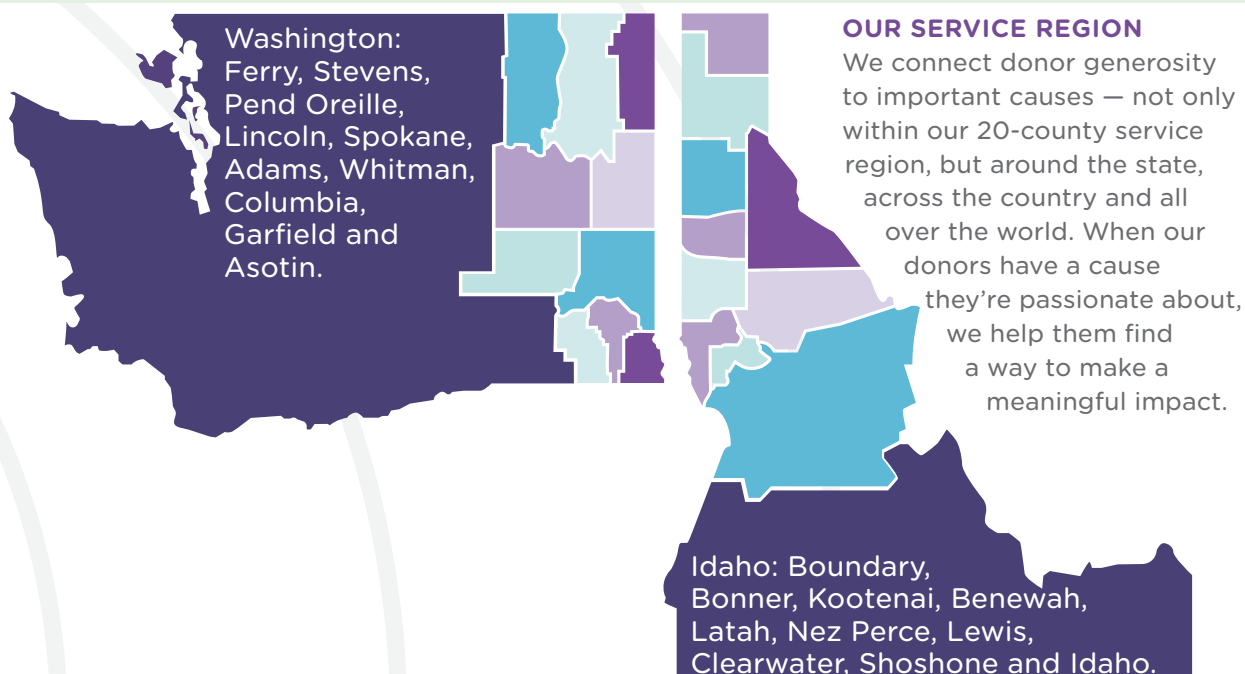
Vibrant and sustainable communities where every person has the opportunity to thrive.

WHAT YOU WILL FIND IN THIS HANDBOOK

What is a Community Foundation?	Page 4
Innovia Foundation Overview	Page 5
Strategic Framework	Page 6
Volunteer Roles	Page 8
Impact Areas at Innovia	Page 10
Grants and Scholarships	Page 11
Community Leadership	Page 12
Research and Community Impact	Page 14
How to Promote Philanthropy	Page 15
Fund Types at Innovia	Page 16
Empowering Donor Generosity	Page 17
Innovia Foundation Staff	Page 18

Meet our communities

Serving a 20-county region, we are the community foundation for Eastern Washington and North Idaho.



VALUES

Innovative

Thinking differently is in our name. We seek and explore new approaches, perspectives and ideas to address what matters most to the people and communities we serve.

Inclusive

We are committed to diversity, equity and inclusion. We seek and embrace the participation and perspective of people and communities that reflect who we are as a region.

Collaborative

We cannot do this work alone. We value the transformative power of partnerships, based on mutual interests, trust and respect. By working together, we can create a more positive and lasting impact on our community.

WHAT IS A COMMUNITY FOUNDATION?

Community foundations are grantmaking public charities devoted to improving the lives of people in a defined local geographic area. Community foundations help local philanthropists of all income levels create or support permanent charitable funds that issue grants to the causes and organizations they love. Community foundations are especially good vehicles for carrying out donors' legacy giving plans.



Creations in Sandpoint, grant recipient

INNOVATIVE PROBLEM SOLVERS SERVING OUR REGION

Community foundations play a key role in identifying and solving community problems. Through grantmaking, advocacy, research and civic leadership, community foundations leverage the resources in communities to address the most important issues and challenges. More than 750 community foundations operate in urban and rural areas throughout the United States.

Innovia Foundation has earned the official National Standards Seal from the Community Foundations Nationals Standards Board which confirms operational excellence in six key areas.

1. Mission, structure, and governance
2. Resource development
3. Stewardship and accountability
4. Grantmaking and community leadership
5. Donor relations
6. Communications

WHAT WE DO

As the community foundation for Eastern Washington and North Idaho, we partner with people who want to make the world better. We work together to address and solve our region's problems, help those in need, identify and respond to our region's greatest opportunities and leave a lasting impact.

45

years of
service*

\$81m+

in total grants and
scholarships awarded
since our inception*

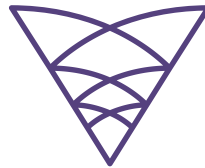
\$137m+

in assets*

*as of June 30, 2019

WHAT YOU CAN EXPECT FROM US

- Orientation and training for the roles we ask you to fill.
- Prompt response to your communications.
- Fair and equitable treatment without discrimination and bias.
- Appreciation, respect and recognition for your partnership.



WHAT WE EXPECT FROM YOU

Innovia Foundation expects every person who represents us to follow these guidelines:

- Represent Innovia professionally and honorably.
- Maintain confidentiality and discretion about Innovia and its donors, grantees and scholarship applicants.
- Declare any conflict of interest as soon as it arises.
- Act for the community benefit at all times.
- Understand the value of philanthropy, and promote a region wide culture of generosity.
- Engage in respectful dialogue between volunteers.
- Respond promptly to communications from Innovia and keep us updated with your current contact information.

Foundation Milestones

1974: The Greater Spokane Community Foundation is incorporated.

1975: \$11,150 is awarded in inaugural grant round.

1977: Foundation hires first Executive Director, Jeanne Ager.

1982: The Pullman Foundation selects the Foundation to continue its legacy and transfer \$127,000 to be managed.

1984: Celebrated 10th anniversary with more than \$1 million in assets.

1991: Name is changed to Foundation Northwest.

1994: Celebrated 20th anniversary with more than \$7 million in assets.

2004: Celebrated 30th anniversary with \$39 million in assets.

2006: Name is changed to Inland Northwest Community Foundation.

2006: \$12 million gift from estate of Margaret Galbraith to fund organizations in North Idaho. This was also the establishment of the North Idaho Partnership Council.

2014: Celebrated 40th anniversary with \$87 million in assets.

2017: \$600,000 grant was awarded to launch Opening Books, Opening Doors K-3 literacy initiative.

2018: Foundation receives \$234,000 grant to establish Research department.

2018: INWCF is rebranded as Innovia Foundation to bring greater awareness and engagement around important issues in the region—and the important work the Foundation was already doing.

2019: Transfer of Wealth study was released showing our region has over \$42 billion transferring generations over next ten years.

2020: Leadership Councils were established throughout the 20-county Innovia service region.

STRATEGIC FRAMEWORK

Innovia Foundation's strategic framework focuses on a vision for the future of our region.

OUR THREE STRATEGIC FOCUS AREAS ARE:



IGNITING GENEROSITY



BUILDING VIBRANT AND SUSTAINABLE COMMUNITIES



ENSURING EVERY PERSON THRIVES

IGNITE GENEROSITY

We believe that generosity is the most powerful source of positive change to achieve our shared goals and values. As your community foundation, we increase opportunities for all people to give of their time, talent and resources to make our part of the world better. We partner with generous individuals, families, businesses and organizations to create vibrant and sustainable communities where every person has the opportunity to thrive.

We will:

Inspire a culture of generosity: From simple acts of kindness, to large transformational gifts, generosity inspires people to improve their communities and change lives. Everyone has something to give, and no one person can do this work alone. We will deliver clear, frequent and inclusive messaging that celebrates generosity and highlights our role in driving community transformation.

Develop deeper relationships with donors: Lasting relationships are built through shared purpose and earned trust. We honor the legacy of our donors by understanding their goals and values and working together to achieve visible results. We seek to know our donors and serve them with a dedication to operational excellence and personalized philanthropy.

Pursue innovative ways to increase assets across our region: We will offer innovative products and giving solutions to catalyze greater impact and inspire donors to take a more active approach to philanthropy. By developing local, regional and national partnerships, we will leverage strategic opportunities to address the complex needs of our communities.

VIBRANT AND SUSTAINABLE COMMUNITIES

We believe strong, vibrant communities are able to confront challenges, nurture the good and create positive change. Such communities require committed leadership and engagement among community members from diverse backgrounds and experiences. As your community foundation, we invest in and support inclusive, community-driven efforts that make our part of the world better.

We will:

Engage thoughtfully with communities in our region: Building and strengthening relationships throughout our 20-county region will make our work more reflective of and relevant to the priorities of our communities. We will commit to being present and engaged, learning about community needs and supporting community momentum.

Strengthen community leadership: Strong communities are inclusive, built on diverse backgrounds, perspectives and participation. We will invest in emerging leaders and trusted voices to identify community priorities and advance transformational efforts.

Invest in community organizations and initiatives: Guided by local priorities and engaged residents, we will invest in programs and initiatives that strengthen the social fabric of the community. We will work to improve access to education, promote health and wellbeing, support arts and culture, create economic opportunity and enhance quality of life.

EVERY PERSON THRIVES

We believe individuals thrive in community. Genuine connection and authentic relationships drive lasting and sustainable impact. Each of us matters and if opportunities are not available to everyone, a community cannot move forward together. As your community foundation, we are committed to bringing people together, elevating diverse voices and creating opportunity for all.

We will:

Respond compassionately to meet basic human needs: Meeting basic human needs is fundamental to improving the quality of life for everyone. The community foundation will collaborate with community partners to address both systemic issues and immediate needs.

Bring people together to build inclusive communities: We believe in bringing people together and building connections that enrich us all. We seek to develop places and spaces where everyone feels they belong and can participate in decisions that affect their lives.

Expand opportunity and reduce inequity: We recognize that persistent and systemic disparities diminish opportunities. We will work to bridge the divide that isolates and prevents members of our community from recognizing and reaching their full potential.

COMMITMENT TO OUR COMMUNITIES

Realizing our vision for vibrant and sustainable communities where every person thrives requires dedication to community leadership and operational excellence.

COMMUNITY LEADERSHIP: The community foundation provides leadership to catalyze transformative change in our region. As a funder and convener, we leverage the following strategies to improve the economic and social wellbeing of our communities.

Civic engagement: We convene and engage key community stakeholders to identify and address our region's most promising opportunities and critical challenges.

Data and research: We use data-influenced decision making to strategically maximize impact and amplify results.

Policy and advocacy: We use our voice and influence to inform and advocate for key strategies that accelerate systemic change.

OPERATIONAL EXCELLENCE: As responsible stewards of the resources entrusted to us, excellence must be embedded in our every endeavor. With confidence in our operations, we can innovate and take intelligent risks necessary to achieve our vision. Our core commitment to operational excellence includes:

Superior service: We hold ourselves accountable to be respectful and responsive to provide an exceptional experience for our donors and community partners.

Continuous process improvement: We are committed to operational efficiency to ensure maximum resources are dedicated to advancing our mission.

Culture of learning: We challenge ourselves to become better every day by embracing and promoting individual and organizational learning and growth.

VOLUNTEER ROLES AT INNOVIA FOUNDATION

BOARD OF DIRECTORS

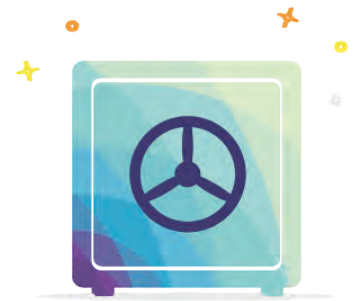
The Board of Directors of Innovia Foundation, in active collaboration and partnership with the CEO, has the responsibility to advance the mission of Innovia Foundation to ignite generosity that transforms lives and communities.

EXECUTIVE COMMITTEE

The Executive Committee, on behalf of the Board, supports the long-term effectiveness of the Board and Board operations by recommending best practices in governance to the Board to fulfill Innovia Foundation's mission, vision and the long-term viability of the board. The committee also supports the long-term effectiveness of the Board by overseeing a process of nominating well-qualified candidates for Board, committee and Board officer positions.

FINANCE COMMITTEE

The Finance Committee, on behalf of the Board, oversees, guides and supports the efforts of the CEO and staff by ensuring that Innovia Foundation is in good health. To do this, the committee develops our financial policies and makes sure they are consistent with our mission and vision. The committee is also responsible for reviewing and recommending for approval the annual operating budget, as well as overseeing the review of the audited financial statements and tax return, including the performance of the auditors.



INVESTMENT COMMITTEE

The Investment Committee, on behalf of the board, oversees, guides and supports the CEO and staff in ensuring that Innovia Foundation's investment policies are consistent with Innovia Foundation's mission and vision. The committee develops and recommends guidelines for asset allocation, risk tolerance and benchmarks, and oversees the administration and performance of all of Innovia Foundation's assets. In addition, the committee oversees the selection, engagement and/or replacement of qualified external investment consultants, including designated advisors and Donor-Designated Advisors.

GIFT PLANNING AND MARKETING COMMITTEE

The Gift Planning and Marketing Committee, along with the Board of Directors, ensures that Innovia Foundation has the financial resources to carry out its mission and vision. Additionally, the committee reviews and approves a marketing and communications plan to share the Foundation's message.



SCHOLARSHIP COMMITTEE MEMBERS

Scholarship committee volunteers are an indispensable part of Innovia Foundation's scholarship programs. These dedicated volunteers carefully review applications, taking into consideration a wide variety of criteria that may include financial considerations, academic achievement, courage in overcoming hardship, community service, drive and commitment. Scholarship committee members bring to the selection process the benefits of their life experiences, their diverse outlooks and their local knowledge to recommend scholarship awards to the best and brightest young people in our region. More than 100 volunteers are involved in the scholarship process. Each ensures that scholarships are awarded in a manner that is fair and consistent with the wishes of the scholarship fund founders.

GRANTS COMMITTEE

The Grants Committee, on behalf of the Board, oversees, guides and supports the efforts of the CEO and staff in recommending to the Board grant awards that fulfill Innovia's mission and vision. Grants are the end result of fundraising, investment of funds and community study. Grants that positively impact the community are one of the true measures of achieving community transformation.

COLUMBIA COUNTY CHILDREN'S FUND COMMITTEE

The Columbia County Children's Fund is an area of interest endowed fund at Innovia Foundation. It was established as a permanent legacy in 1984 by family members of Frances Broughton Boyd Milham of Dayton, Washington. The fund supports organizations in Columbia County, Washington that provide educational enrichment and special needs programs, guidance, counseling and therapy to children and their families, as well as medical and dental services and supplies for disadvantaged children. A committee comprised of individuals representing Columbia County recommends grants from this fund.



LEADERSHIP COUNCIL MEMBERS

Leadership Councils play a vital role in the Foundation's work by providing representation from throughout Innovia's 20-county service area. Leadership Council members serve as ambassadors and advisors to Innovia Foundation, as well as advocates for philanthropy, in general. Members attend two Leadership Council meetings per year and represent Innovia in their communities as we work together to ignite generosity that transforms lives and communities.

Region 1: Ferry, Stevens and Pend Oreille Counties

Region 2: Spokane County

Region 3: Lincoln and Adams Counties

Region 4: Whitman and Latah Counties

Region 5: Columbia and Garfield Counties

Region 6: Asotin and Nez Perce Counties

Region 7: Clearwater, Lewis and Idaho Counties

Region 8: Benewah and Shoshone Counties

Region 9: Kootenai County

Region 10: Boundary and Bonner Counties

REGIONAL GRANTMAKING ADVISORY COUNCILS

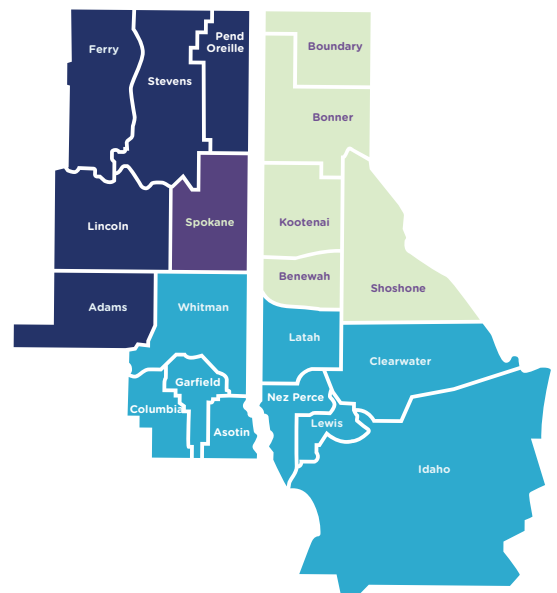
Members of Innovia's Regional Grant Advisory Councils help evaluate Community Grant proposals. Volunteer grant reviewers have an awareness of the diversity and complexity of communities and the nonprofit sector, and the ability to analyze grant applications objectively. Volunteers review applications from their region and make funding recommendations to meet local needs and pursue innovative opportunities.

Region 1: Ferry, Stevens, Pend Oreille, Lincoln and Adams Counties

Region 2: Spokane County

Region 3: Whitman, Columbia, Garfield, Asotin, Latah, Nez Perce, Lewis, Clearwater and Idaho Counties

Region 4: Benewah, Shoshone, Kootenai, Bonner and Boundary Counties



Impact Areas

We work to improve access to education, promote health and wellbeing, support arts and culture, create economic opportunity and enhance quality of life.



HEALTH AND WELLBEING

Helping people live healthier, happier lives

Healthy individuals make up a healthy community. We strive to ensure everyone's basic needs are met, and we look for areas where we can help people achieve healthier, happier lives.



EDUCATION AND YOUTH DEVELOPMENT

Promoting success through education

Quality education has the power to change lives. We provide opportunities for success to children and adults by ensuring they receive the education and support they need to learn, grow and thrive.



ARTS AND CULTURE

Creating vibrant and accessible cultural and enrichment experiences for all

The arts inspire us and bring creativity and joy to our communities. We look for ways to create vibrant and accessible cultural and enrichment experiences for all.



ECONOMIC OPPORTUNITY

Catalyzing innovation and collaboration to support and strengthen our economy

Economic opportunity opens the door to a brighter and more sustainable future for individuals, families and entire communities. We catalyze innovation and collaboration to support and strengthen our economy.

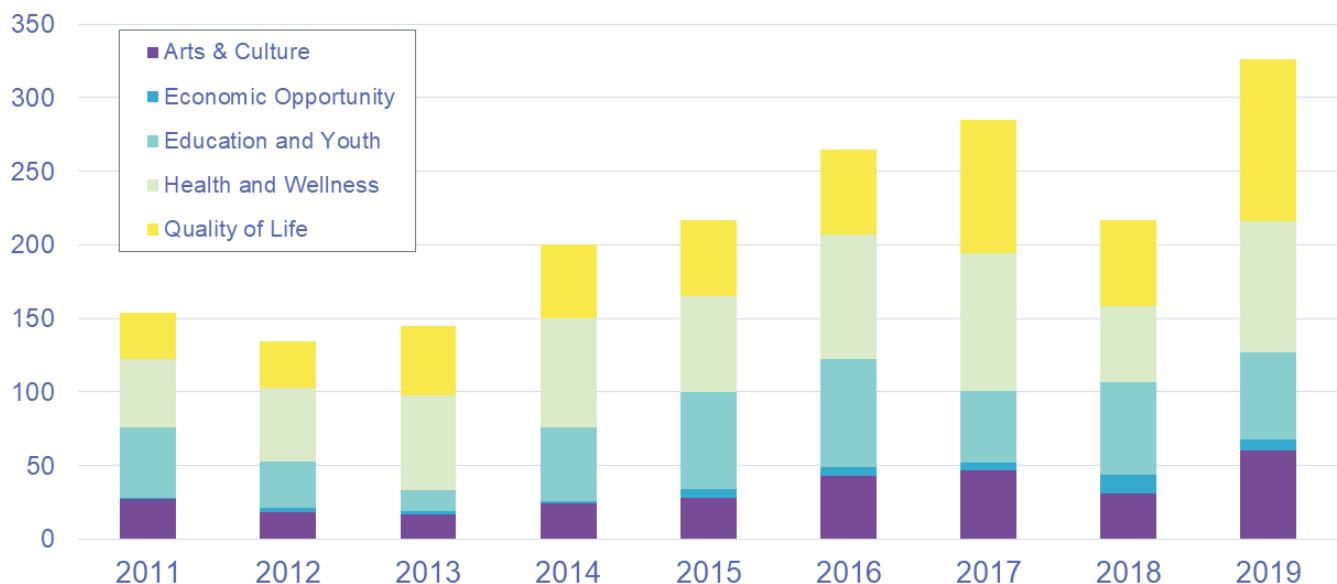


QUALITY OF LIFE

Protecting and improving what makes our part of the world special

We love living in our beautiful, lush region and are passionate about protecting and preserving the spaces, places and environments that make our part of the world so special.

Competitive Community Grants Awarded by Impact Area



GRANT AND SCHOLARSHIP PROGRAMS

Awards from the following competitive grant programs are determined in partnership with local volunteers from throughout the Foundation's service area. This locally based advisory process ensures that grant opportunities address the changing needs of our communities.



The Community Grant Program is Innovia's flagship grant program, funding all five of our impact areas across our 20-county service region. Comprised of approximately 90 pooled funds, this program awards \$1,000,000 each year. The maximum grant award is \$30,000, with most grants ranging from \$10,000 to \$20,000 for a one-year period.

The Equinox Grant Program is offered as a partnership between Innovia Foundation and the Equinox Foundation, a private family foundation located in Sandpoint, Idaho. This family foundation was established on the values of wisdom, integrity and environmental stewardship. Funding from this program can be used to support all five of Innovia's impact areas for nonprofits providing services in Bonner and Boundary counties in North Idaho. The maximum grant award is \$30,000, with most grants ranging from \$10,000 to \$20,000 for a one-year period.

The Columbia County Children's Fund provides support to organizations within Columbia County, Washington. To be eligible for funding, applications must address one of the following program areas: educational enrichment and special needs programs; guidance, counseling and therapy to children and their families; or medical and dental services and/or supplies for disadvantaged children. Individual grant awards are typically less than \$4,000 and are awarded for a one-year period.

The Opportunity Grant Program provides support for timely and compelling opportunities, or emergency funding needs, for organizations with a grant request that requires a quick turnaround. Grant awards from this program are \$2,000 or less. The Opportunity Grant Program has a rolling application process and awards are announced within thirty days of the application being submitted. Grants from this program can be used to provide funding in all five of Innovia's impact areas across our 20-county region.



Scholarship Programs at Innovia Foundation recognize that with education comes opportunity. Our donors agree. We work with donors to establish scholarships to help students achieve their higher education goals. Each year, we award more than 100 scholarships to deserving students who are college-bound or pursuing career training.



Harrington Town Square Project:

Last year, Innovia Foundation awarded a \$30,000 challenge grant to the community through the Community Grant Program to build a town square. Innovia matched every \$1 the community contributed to the Harrington Town Square Project, up to \$30,000.

The Harrington Town Square will soon replace an empty downtown lot with a place for community gatherings, connections and events.

COMMUNITY LEADERSHIP

Realizing our vision for vibrant and sustainable communities where every person thrives requires dedication to community leadership. Every community has unique opportunities and challenges. In partnership with our communities, Innovia Foundation provides leadership to catalyze transformative change in our region. As a funder and convener, we are dedicated to learning about, and investing in, collaborative, community-based efforts.

PRIORITY SPOKANE

Innovia Foundation was the primary convening organization that led to Priority Spokane, a collaboration of organizations working to create a vibrant future for Spokane County. The goal of Priority Spokane is to foster measurable improvements in key areas of community vitality. A coalition of 19 organizations, the group sets a big, challenging goal for itself every few years and then strategizes how to deploy resources to achieve it. Priority Spokane uses research from the Eastern Washington University Community Indicators Project to make data-influenced decisions, which are resulting in measurable improvements.

To date, Priority Spokane has successfully worked to help decrease the dropout rates in local schools. The results of their pilot project aimed at reducing family homelessness have been impressive. More than 100 families, and nearly 300 children, were either placed in housing or stabilized and prevented from becoming homeless. That represents more than three-quarters of the students the project engaged. Of those, 95 percent remain stable and housed today, based on monthly check-ins. Last year, Priority Spokane announced its next priority: reducing the effects of family trauma on children.

More than 100 families, and nearly 300 children, were either placed in housing or stabilized and prevented from becoming homeless.

JUMPSTART NONPROFIT FUNDRAISING

The Jumpstart Program is a fundraising capacity-building program that Innovia Foundation offers in partnership with Network for Good. This past year, Innovia funded 11 nonprofit organizations from across our region to go through this yearlong program, which includes access to fundraising software, webinar trainings and one-on-one fundraising consultation. As a result of the first year, the initial \$29,000 granted by Innovia Foundation to implement Jumpstart translated into a growth of more than \$300,000 raised by the Jumpstart participants. Innovia's investment in Jumpstart reflects our commitment to build the capacity and sustainability of our nonprofit partners, which are integral to vibrant communities where every person thrives.



“We experienced unprecedented success. We tripled our revenue and raised more in four months of 2018 than we raised in all of the prior fiscal year. That will go a long way to helping refugees settle in Spokane.”

World Relief, Jumpstart Participant

RURAL LEADERSHIP DEVELOPMENT

In 2018, Innovia Foundation launched a three-year rural leadership program in partnership with other regional funders to build the sustainability of rural communities in our region. The Greater Palouse Rural Community Leadership Program connects residents to each other and to their communities. Participants – ranging in age from high school students to retired seniors – join in 45 class hours of leadership training.

Each class selects a community project to work on together, which provides real-life opportunities to apply their developing leadership skills. The 2018 leadership cohort successfully established “sharing pantries” in the communities of Colton and Uniontown. These pantries allow community members to share items with others in their communities who may be in need, and include items such as food, hygiene supplies and even games and toys. The 2019 leadership cohort brought together residents from southeast Spokane County and northern Whitman County to create “Palouse Pride,” a community art project. Residents in both counties now proudly fly their specially designed Palouse Pride flags demonstrating that community spirit in the Palouse is not divided by county lines.

OPENING BOOKS, OPENING DOORS

Innovia Foundation is driving community transformation in Coeur d’Alene through the Opening Books, Opening Doors initiative. Motivated by community interest, this program is anchored by a \$600,000 grant from Innovia Foundation and other funders, including Numerica Credit Union, Mountain West Bank, Columbia Trust and Bouten Construction. The initiative coordinates the efforts of University of Idaho, the Coeur d’Alene School District and community partners to help every third-grade student in the Coeur d’Alene School District read at grade-level by 2020.

There are 4 key strategies of the three-year initiative:

- 1) **Kindergarten readiness** includes a partnership with United Way of North Idaho in support of their Ready! for Kindergarten Program.
- 2) **Quality teachers in a literacy rich learning environment** includes professional development in the Coeur d’Alene School District centered on teaching balanced literacy and thinking strategies in the classroom; an Adopt-A-Classroom Library in which individuals and businesses donate \$500 to new K-3 teachers to purchase discounted books from a local bookstore for their classroom libraries; and a Book Buddy Program in which caring community adults meet weekly, one-on-one, with young, struggling readers.
- 3) **Parent engagement** provides instruction, encouragement and a new book to families of preschoolers via pediatric healthcare clinics through a partnership with Reach Out and Read.
- 4) **Out-of-school learning** is reinforced by sending home summer backpacks, with 12 student-selected books, to every K-2 student reading below grade-level.

By investing in these areas, Opening Books, Opening Doors encourages students to nurture a love for reading and become fluent readers prepared to conquer future academic challenges.

In 2019, Opening Books, Opening Doors launched a public action campaign called “This Book” to foster community support and buy-in. “This Book” creates community wide awareness and ownership for childhood reading success and urges everyone to read to a child, donate a book and help build a stronger community. More information: innovia.org/thisbook.



We know that when children struggle to read, it hurts a community’s wellbeing. Studies show that literacy has the power to open doors for success, grow the economy, remove socio-economic barriers and even reduce incarceration rates.

RESEARCH AND COMMUNITY IMPACT

In 2018, Innovia Foundation created a new department of Research and Community Impact. Innovia's research program brings a new emphasis on evaluation and learning to the programs and initiatives at the Foundation. This research focus informs internal work, such as recently completed surveys providing feedback from donors and grantees. Research support at Innovia is also intended to help community partners communicate meaningful outcomes and measurable change taking place in this region.



Community research and impartial analysis can highlight opportunities and provide reliable data for decision-making. With these priorities in mind, research efforts at Innovia center around the following efforts:

Identifying Community Needs: Innovia Foundation recently completed an in-depth, community needs and opportunity assessment for a nine-county region in Southeast Washington and North Central Idaho. The assessment was based on 1) results from a community survey sent to a random sample of area households, 2) data analysis of community indicators, and 3) feedback from a series of nine community forums attended by hundreds of participants throughout the region. This project demonstrates that data and conversations are necessary to understand the most pressing issues in a community. Resources and results from the needs assessment are available on the project data hub: www.inwinsights.org

Developing and Supporting Community Research: Innovia Foundation also supports valuable research being conducted by experts in this region. The Foundation contributed to a recent report and dashboard on the state of women and children in Spokane County. Innovia works with area faculty to evaluate Foundation initiatives and also sponsors inter-university consortiums, such as the Health Service Research Roundtable and Partners in Campus and Community Engagement.

Focusing on Community Impact: With greater research capacity, Innovia Foundation plans to support community groups interested in measuring and monitoring program outcomes. We recently introduced a new grant application that incorporates questions from Guidestar's *Charting Impact* framework. The questions provide a way for organizations to consider, clarify and communicate progress toward impact. We aim to encourage results reporting through this platform and plan to continue sharing stories of impact in the communities we serve.

Lewis-Clark Valley Data Walks

In the fall of 2019, Innovia Foundation and Lewis-Clark Valley Hospital Foundation hosted community forums and "data walks" in Moscow, Pullman, Lewiston-Clarkston, Grangeville and Orofino. The data walks included several stations where participants could review results from a nine-county needs and opportunity assessment coordinated and implemented by Innovia. Data was gathered on topics including healthcare access and affordability, food security, housing affordability, economic opportunity and behavioral health.

A diverse group of over 300 community members joined the nine forums and participated by sharing stories of their lived experiences and discussed previous solutions that have been tried in each community.



HOW TO PROMOTE PHILANTHROPY



As an ambassador for Innovia Foundation, you can advance our mission by promoting the community benefits and life-changing impact of generosity in your community.

Working with Innovia will connect you with inspiring examples of local philanthropy. We hope you will share the stories with others!

8 WAYS YOU CAN IGNITE GENEROSITY IN YOUR COMMUNITY:

Tell your professional advisors about Innovia Foundation's services and the benefits for donors and communities across our region.

1

Let people know there's more to philanthropy than simply donating money. Generosity comes in all shapes and sizes, and includes gifts of time, talent and resources.

2

Use social media to promote causes you care about, current opportunities for community involvement, and inspirational stories about philanthropy in your community and across our region.

3

When you give, make your gift a challenge to be matched by others. Or, create a giving circle; pool money with family and friends, and decide together where to make your charitable contribution.

4

Share personal stories about your involvement in philanthropy and its personal and community benefits. This inspires others, and truly ignites generosity.

5

Encourage your children to become involved in philanthropy at an early age. Research shows that children whose parents talk to them about charitable activities are 20% more likely than others to give as adults.

6

Create or contribute to a scholarship fund that benefits students in your community or field.

7

Make sure your own estate plan includes a contribution to the causes you care about most. Consider joining the 5% campaign with a bequest to your local community endowment.

8

SOCIAL MEDIA:



FACEBOOK

[facebook.com/
innoviafoundation](https://facebook.com/innoviafoundation)



INSTAGRAM

[instagram.com/
innoviafoundation/](https://instagram.com/innoviafoundation/)



TWITTER

[twitter.com/
innoviafdn
@innoviafdn](https://twitter.com/innoviafdn)



LINKEDIN

[linkedin.com/company/
innovia-foundation](https://linkedin.com/company/innovia-foundation)

FUND TYPES AT INNOVIA



Designated Funds support nonprofits, schools and churches, year after year, for generations, through annual distributions. An Agency Fund is a designated funds set up by a nonprofit organization for its own benefit.



Scholarship Funds support students attending colleges, universities and vocational schools in this region and beyond.

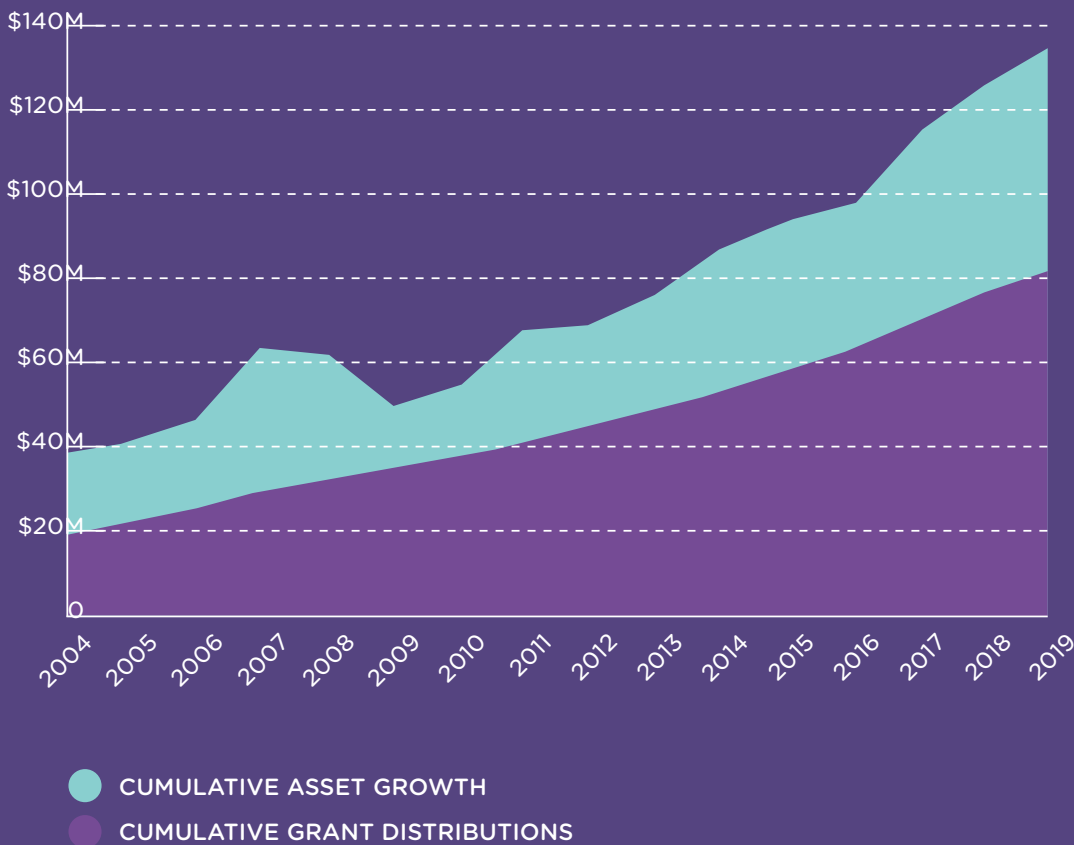


Donor-Advised Funds provide the flexibility for donors to support nonprofits, schools, churches and other projects that benefit the community, in amounts they choose throughout the year.



Community Funds support programs and charitable causes to drive community transformation in our region.

Foundation Cumulative Assets and Grant Distributions



EMPOWERING DONOR GENEROSITY

Innovia Foundation works with individuals, families, attorneys, and estate and financial planners to design gift plans tailored to meet diverse economic situations, maximizing the benefit donors receive from their contributions, as well as the impact of their philanthropic dollars.



TYPES OF ASSETS WE ACCEPT

In addition to welcomed gifts of cash, which include checks and online gifts using a credit or debit card, we encourage donors to consider making gifts of the following assets.

IRA & Qualified Retirement Plans

For many people, this is the largest asset they will possess at the time of their death. It is also the most heavily taxed asset if it is transferred to a person other than a spouse or charitable organization. Donors can avoid the heavy tax burden of these plans by using all or part of these assets to make charitable contributions. The process is as simple as contacting the company holding the IRA and changing the beneficiary designation to Innovia Foundation to be added to one or more named funds.

Real Estate

Making a charitable gift of highly appreciated real estate can help turn property gains into community good. Gifts of real estate range from personal residences and vacation homes to rental properties, farmland and commercially developed land. With the help of the community foundation, donors can give real estate to avoid estate taxes, minimize or eliminate burdens placed on their heirs and make a bigger charitable difference than they thought possible.

Life Insurance

Donors can name Innovia Foundation in their life insurance policy that designates a specific fund.

Charitable Remainder Trust

Donors can establish a charitable trust to provide income for themselves or a loved one during their lifetime and support the community forever. With a charitable trust, donors make gifts directly to a trust, receive an immediate tax deduction and generate income for life or for a term of years. Donors can establish a charitable trust in their lifetime that provides income for life and ensures all remaining funds support their charitable legacy. They can also establish a charitable trust through their will to benefit heirs for their lifetimes and ensure all remaining funds support their charitable legacy.



Laurie Vessey Fund for Cleft Lip and Palate at Innovia Foundation

MEET THE INNOVIA FOUNDATION TEAM

Shelly O'Quinn

Chief
Executive
Officer



Lauren Autrey

Chief
Financial
Officer



Mason Burley

Director of
Research and
Community
Impact



Connie Emry

Administrative
Assistant



Alicia Heiser

Grants
Program
Associate



Collette Jarvelin

Donor
Services
Specialist



Kathy Johnson

Executive
Assistant



Meg Lindsay

Education
Program Director



Aaron McMurray

Chief
Strategy
Officer



Lauren Nissen

Philanthropic
Engagement
Manager



Alex Panagotacos

Spokane
County Census
Committee
Coordinator



Molly Sanchez

Director of
Grants and
Community
Engagement



Chris Stiles

Director of Gift
Planning &
Development



PJ Watters

Director of
Gift Planning



Amy Voeller

Opening Books,
Opening Doors
Program Manager



Lou Wilmot

Administrative
Assistant



NOTES

This image shows a full page of white paper with horizontal blue or grey ruling lines. The lines are evenly spaced and run across the width of the page. On the far left edge, there is a vertical green margin strip. The paper appears to be a standard notebook or worksheet template.



innovia.org • info@innovia.org • 509-624-2606
421 W Riverside Ave | Suite 606 | Spokane, WA 99201