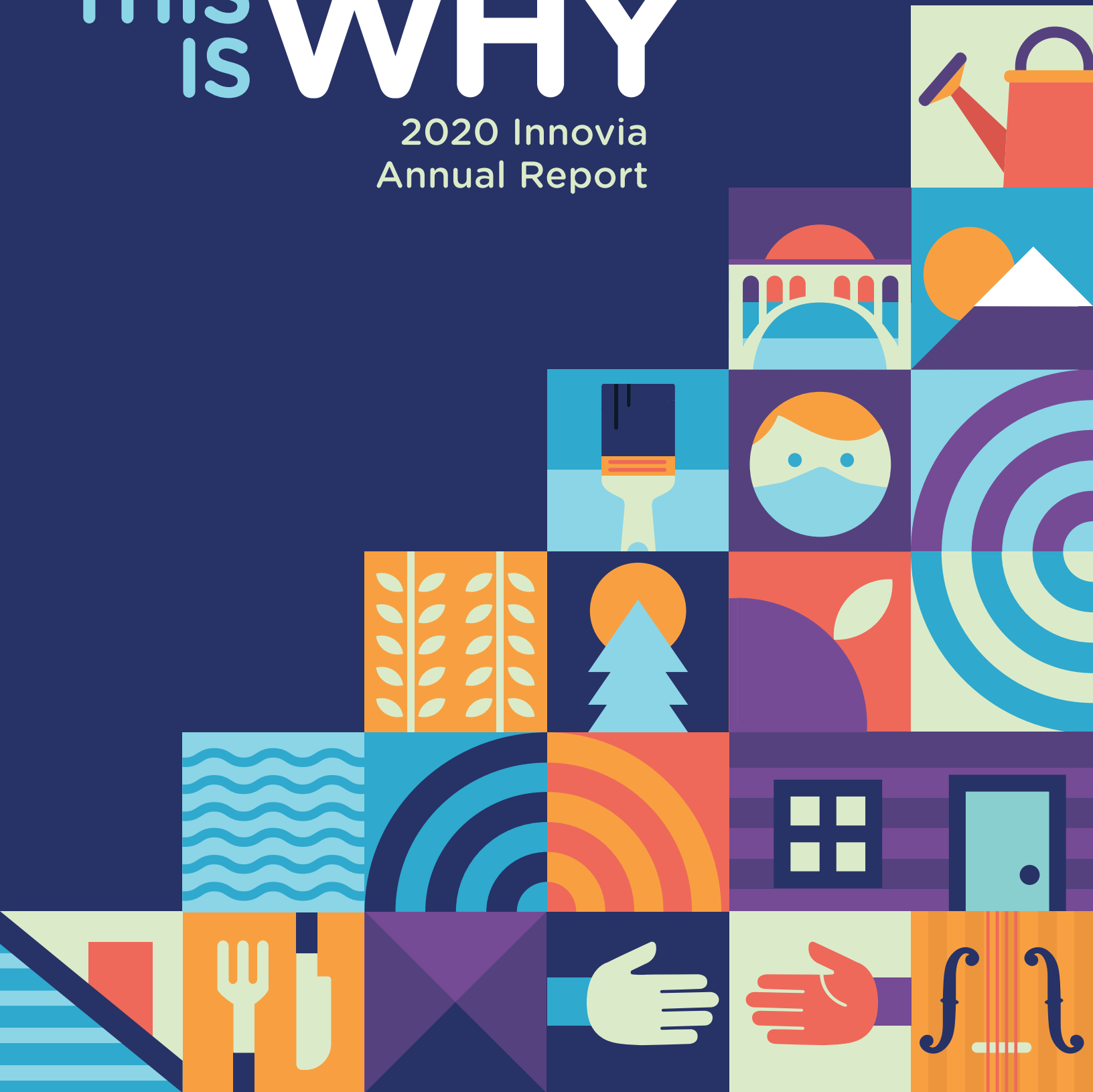


THIS IS WHY

2020 Innovia
Annual Report



MISSION

To ignite generosity that transforms
lives and communities

VISION

Vibrant and sustainable communities
where every person has the opportunity
to thrive.

AT A GLANCE NUMBERS

46
YEARS OF SERVICE

\$91m+
TOTAL GRANTS AND
SCHOLARSHIPS AWARDED
SINCE OUR INCEPTION

\$145m+
ASSETS

INNOVIA FOUNDATION TEAM

Shelly O'Quinn
Chief Executive Officer

Lauren Autrey
Chief Financial Officer

Sarah Bain
Interim Grants Associate

Mason Burley
*Director of Research and
Community Impact*

Connie Emry
Administrative Assistant

Collette Jarvelin
Donor Services Specialist

Kathy Johnson
Executive Assistant

Meg Lindsay
*Director of Education
Programs*

Aaron McMurray
Chief Strategy Officer

Lauren Nissen
*Philanthropic Engagement
Manager*

Molly Sanchez
*Director of Grants and
Community Engagement*

Chris Stiles
*Director of Gift Planning
and Development*

Amy Voeller
*North Idaho Regional
Engagement Manager*

PJ Watters
Director of Gift Planning

Lou Wilmot
Administrative Assistant

INNOVIA FOUNDATION FELLOWS

Kylee Dickinson

Rachel Quick

Erin Sellers

Milagros Yoch



As your community foundation, we have watched our region rise up to meet the tremendous challenges of this year with unparalleled generosity. When the COVID-19 pandemic arrived and the perpetuation of racially motivated injustices threatened the wellbeing of our communities, your strength and resilience lit the way forward, emboldening our pursuit of vibrant and sustainable communities where every person has the opportunity to thrive.

Working side by side with our committed partners, donors and friends, we have seen established networks grow and new networks take root this year. Behind each uplifting story shared in this year's annual report you will find a shared commitment to ignite generosity through innovative thought, inclusive dialogue and trusted collaboration. As we anticipate the challenges and opportunities of the future, we lean into our "why" more than ever, celebrating the values that draw us together and power our movement forward.

We believe meaningful change happens when people are connected to the causes that spark their passion. **This is why** we launched our COVID-19 Community Response and Recovery Funds in March, transforming the compassionate philanthropy in our communities into tangible aid for those hardest hit by the pandemic. In partnership with funders, we have granted more than \$2.7 million to organizations serving in every corner of our region.

We cherish the diversity of voices and perspectives that reflect who we are because we know equitable philanthropy catalyzes community transformation. **This is why** we established our anti-hate policy this year to reaffirm our belief in the power of inclusive, transparent grantmaking.

We invest in the growth of our community networks because we know collaboration produces meaningful community impact. **This is why** we invited more than 220 community representatives from across North Idaho and Eastern Washington to participate in our inaugural Leadership Summit in early March. Our Leadership Councils have offered fresh insight into the greatest needs facing our communities, energizing our efforts to better serve the people who call this region home.

Thank you for your generous investment in the wellbeing and vitality of our region this year. As we prepare for the year ahead, your committed generosity is what inspires our hope for a brighter future. By working together, even on the darkest of days, we have seen lives and communities improved. **This is why** we warmly invite you to join us in celebrating the values we share and catalyzing the change we all wish to see in this world.

Shelly O'Quinn
CEO

Bob Larson
Board President

BOARD OFFICERS FISCAL YEAR 2021

President

Bob Larson

Vice President

Geraldine Lewis

Secretary- Treasurer

Tyler Lafferty

DIRECTORS FISCAL YEAR 2021

Rob Blume

Carla Cicero

Rueben Mayes

Marcelo Morales

Sandy Patano

Rick Rasmussen

Bonnie St. Goddard

Gary Stokes

Betsy Wilkerson



FY 2020

GRANTS



COVID-19 Response - \$1,581,005

COVID-19 Response and Recovery Funds were established in response to the COVID-19 pandemic to support community-based organizations in Eastern Washington and North Idaho working on the frontlines to serve our region's most vulnerable populations during this outbreak. In FY2020, we awarded **326 GRANTS**.

Donor-Advised - \$4,141,600

Donor-advised funds provide the flexibility for donors to support nonprofits, schools, churches or other projects that benefit the community, in amounts they choose throughout the year. In FY2020, we awarded **865 DONOR-ADVISED GRANTS**.

Community - \$2,738,780

Community funds support programs and charitable causes to drive transformation in our region. In FY2020, we awarded **171 COMMUNITY GRANTS**.

Designated - \$1,594,685

Designated funds support nonprofits, schools or churches, year after year for generations through annual distributions. Last year, we awarded **247 DESIGNATED GRANTS**.

Scholarship - \$255,701

Scholarship funds support students attending colleges, universities and vocational schools in this region and beyond. In FY2020, we awarded **80 SCHOLARSHIPS**.

1,689

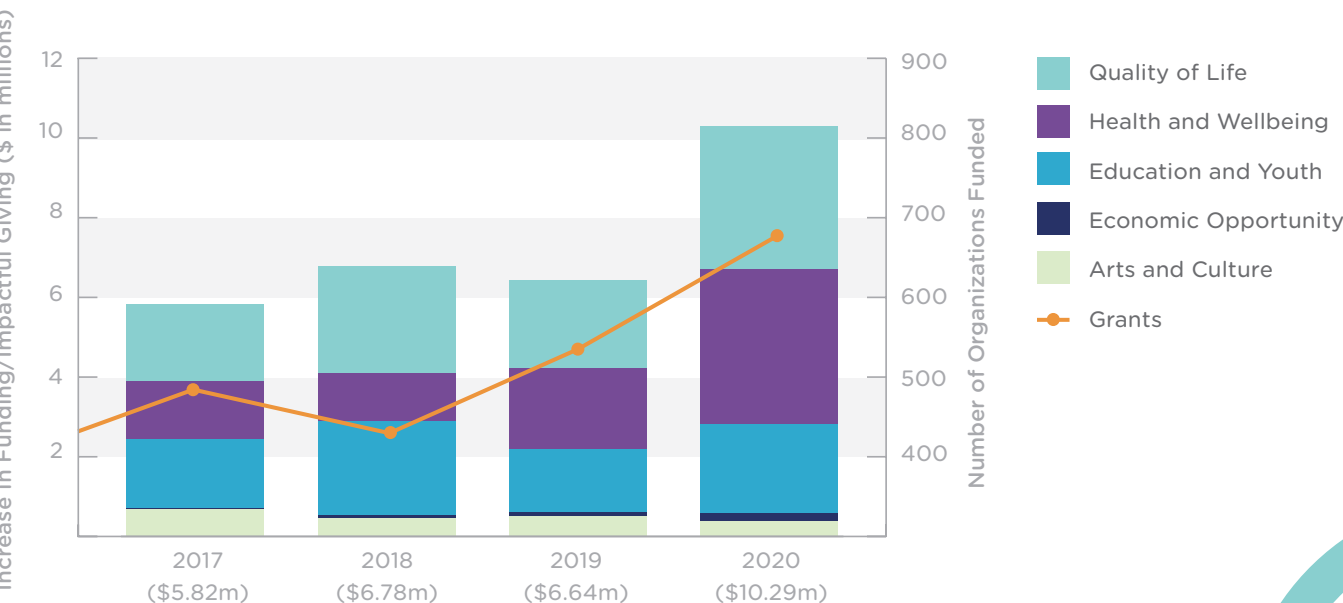
GRANTS DISTRIBUTED TO NEARLY
700 ORGANIZATIONS



Impactful Giving

Impactful giving starts by blending passion with purpose. The causes you believe in are reflected in the collective giving opportunities at Innovia Foundation. We bring in-depth community knowledge developed through nearly 50 years of working in our region. This impact continues to grow. In fiscal year 2020, Innovia distributed over \$10 million in grants

to nearly 700 community organizations throughout our 20-county region. Our reach in the community enables us to build connections between groups and to make meaningful community impact across a range of important issues including arts and culture, education and youth, health and wellbeing, economic opportunity and quality of life.



COVID-19 RELIEF



Responding Compassionately to Meet Needs and Support Community Recovery

*We believe individuals thrive in community.
Genuine connection and authentic relationships
drive lasting and sustainable impact.*

As communities, small businesses and nonprofits have sought to recover from the impact of COVID-19, our region has needed collaborative problem solving more than ever. Meeting basic human needs is fundamental to improving the quality of life and helping communities recover. **This is why** we, along with Spokane County United Way, Empire Health Foundation, Avista Foundation, Equinox Foundation, Lewis-Clark Valley Healthcare Foundation and other generous partners launched the COVID-19 Community Response and Recovery Funds to serve our region's most vulnerable populations during the pandemic.

This crisis has further exposed and deepened the health inequities in our region, particularly among communities of color. Our funding partners recognize this reality and have prioritized many of these funds to support grassroots and faith-based organizations that are trusted in the communities they serve.

COVID-19 Supporting Partners

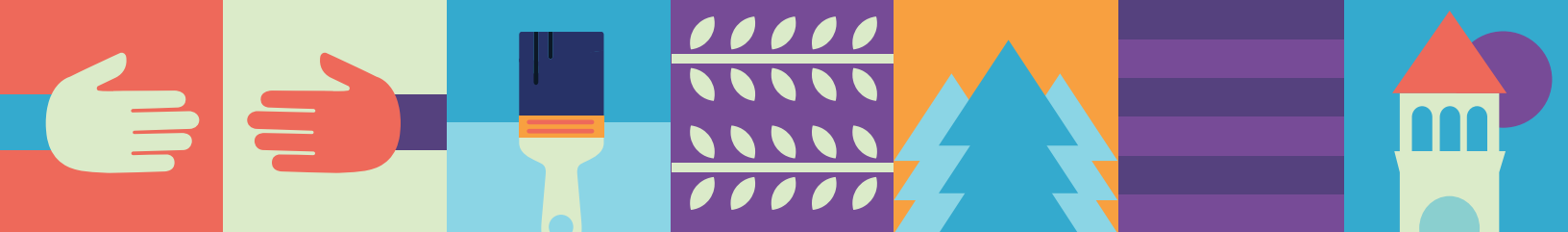
Bank of America	Ittron
BNSF Railway Foundation	PotlatchDeltic Corporation
Blue Cross of Idaho Foundation	Providence Health Care
Community Building Foundation	STCU
Harriet Cheney Cowles Foundation	Umpqua Bank
Horizon Credit Union	Walmart
Inland Imaging	Wells Fargo
	Women Helping Women Fund

For more information about the COVID-19 Community Response and Recovery funds, visit innovia.org/covid19.

"Collaboration and partnership have always been important in our region, but perhaps never more so than this year," says **Tim Henkel, President & CEO of Spokane County United Way**. "The level of cooperation and communication among the funders to respond quickly and generously has truly been remarkable!"

COVID-19 Major Funding Partners (\$50,000+)



2,500 COVID-19 Grants Totaling \$25.8 Million

Through the generosity of community partners, we have distributed over 2,500 grants totaling more than \$25 million to organizations and businesses in Eastern Washington and North Idaho from April 1, 2020 through December 15, 2020.

Innovia COVID-19:

\$2.7 Million

Funding partners large and small responded generously to support local communities in response to COVID-19. Collectively, Innovia donor-advised fund holders, individual donors and philanthropic organizations provided \$2.7 million to mitigate the impacts of COVID-19 in this region.

CARES Fund:

\$23.1 Million

Federal CARES dollars were distributed in partnership with Spokane County, Spokane Valley Chamber of Commerce, Greater Spokane Inc. and other community partners.

Tribal Community Grants

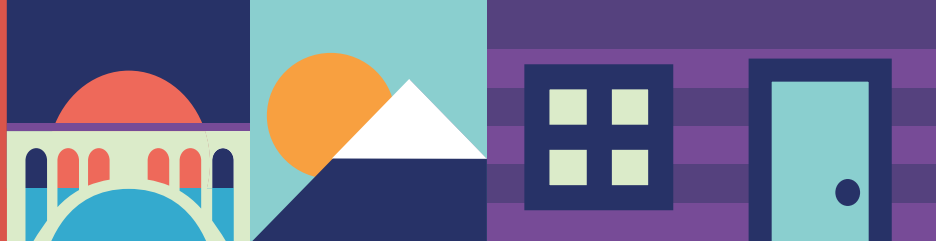
Our region is home to six tribes and many more Native Americans living off reservation in communities across our region. Tribal health leaders have come together with regional funders to direct flexible resources to their COVID-19 response.

“The spread of COVID-19 is affecting American Indians and Alaska Natives at a rate 3.5 times higher than non-Hispanic Whites,” says **Former Empire Health Foundation Interim President Jeffrey Bell**. “This pandemic is especially deadly for Tribal communities because of pre-existing health and socioeconomic disparities caused by persistent racial inequity and historical trauma.”

**IN FY2020, INNOVIA AWARDED
16 COMMUNITY GRANTS TOTALING
\$209,500 TO THE FOLLOWING TRIBES:**

Spokane Tribe of Indians
The Confederated Tribes of the Colville Reservation
Kalispel Tribe of Indians
Kootenai Tribe of Idaho
The Coeur d'Alene Tribe (Schitsu'umsh)
Nez Perce Tribe

MAKING LEADERSHIP LOCAL



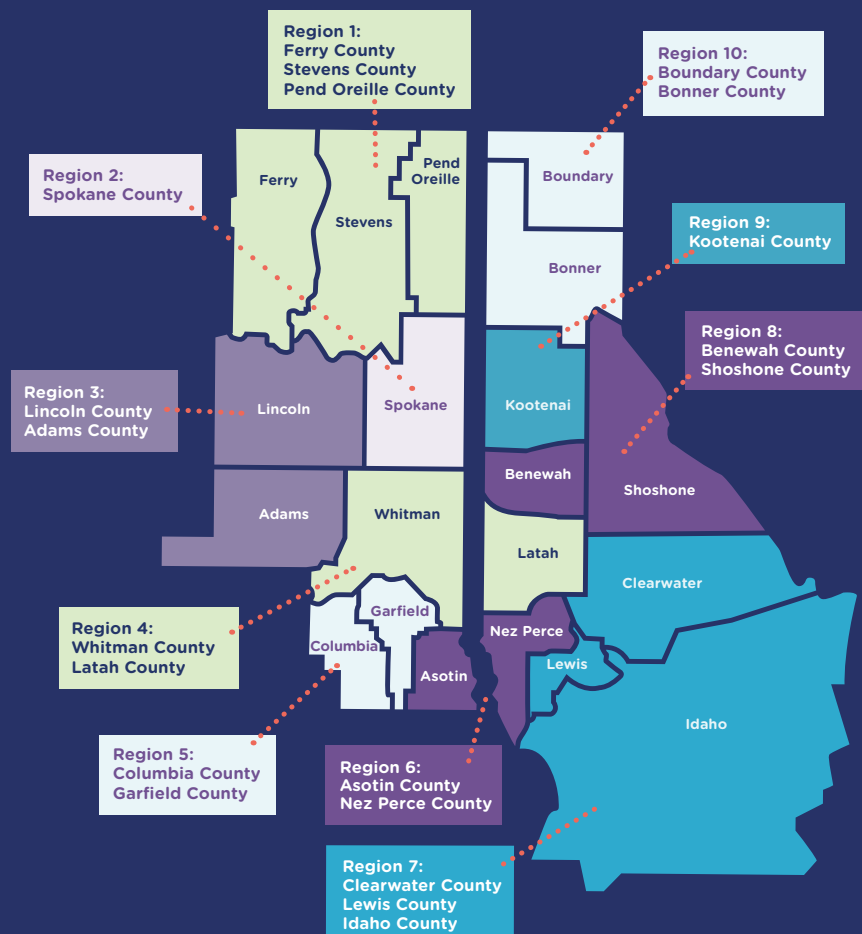
We believe meaningful change happens when passionate and caring people come together with a common purpose. **This is why** in early March, we gathered together Leadership Council volunteers and other community leaders at our inaugural Community Leadership Summit. The summit launched partnerships that will expand opportunities and accelerate prosperity in both rural and urban communities. With more than 200 in attendance, the summit explored how we can collectively advance vibrant and sustainable communities throughout Eastern Washington and North Idaho.



Leadership Councils

Innovia Foundation believes in the power and potential of community connection. We have 15 committed staff members who thrive on getting to know community voices throughout our region. We also understand that with one million residents in 20 counties, it's vital that we grow a network of ambassadors who are similarly committed to the promise and potential of community philanthropy.

With this vision in mind, we recruited our first cohort of Innovia Leadership Council volunteers who are trusted voices and recognized leaders in their communities. Our council volunteers bring on-the-ground experience from a variety of sectors including education, health care, business, nonprofit management, elected offices, tribal governments, and more. These ambassadors bring the voice of their communities to our work, providing insight into ways philanthropy can enrich our lives. As we further bolster this network, we hope to build substantial community-directed endowments in each of the 10 leadership council regions.



CARL MAXEY CENTER

Bridging Divides

The Carl Maxey Center in Spokane bridges a vital gap in connecting Spokane's African American community to critically needed resources.

A \$20,000 grant to The Carl Maxey Center in Spokane supported their efforts to create a safety net to keep our businesses from losing ground and to develop a bridge to get us through the COVID-19 crisis to the other side.

By investing in the Center, we are investing in an underserved and indispensable part of our community.

"What Spokane's African American community desperately needs right now is targeted assistance, directed specifically at our community," says Sandra Williams, Executive Director of the Carl Maxey Center. "This grant acted as both a safety net to keep our businesses from losing ground, and as a bridge to get us through the COVID-19 crisis to the other side."



COMMUNITY ACTION CENTER

Shelter in the Storm

In a city where university students are critical to the economy and rental properties constitute 65% of total housing, the pandemic quickly created an affordable housing crisis for many Pullman residents. Thanks to a \$10,000 COVID-19 Response and Recovery grant from Innovia, the Community Action Center was able to support a Housing Solutions Program that provides emergency housing assistance and eviction prevention.

Additional grant dollars from Innovia also have enabled the Center to meet increased demand for emergency food through participation with Pullman Serves It Forward. That partnership leveraged an additional \$37,000 in community donations to purchase gift cards from local restaurants to distribute to food bank clients. It demonstrates how the right strategic partnerships can maximize donors' dollars and amplify their reach, in this case by benefitting both local residents and local businesses.

NAMI FAR NORTH

Addressing the Mental Health Crisis

The stress and uncertainty of the COVID-19 pandemic has left many in need of mental health support. The National Alliance on Mental Illness (NAMI) Far North seeks to raise awareness about mental health needs and to support those in Bonner and Boundary counties who find their lives disrupted by mental health challenges. A \$5,000 grant from Innovia helped staff the North Idaho Crisis Services (NICS), an after-hours crisis line that serves as a first point of contact for residents experiencing an emergency. The grant also funded an expanded campaign to advertise mental health services available to the community, helping to ensure that every individual has the resources they need to pursue a better quality of life.



IDAHO FOODBANK

Feeding North Idaho

During a pandemic, much of the focus shifts to cities with denser populations, but smaller communities also suffer in ways that are unique from their larger counterparts. During a national food shortage, food access can be especially tenuous in remote locations. With a population of just 94, White Bird, Idaho is one of dozens of communities in North Central Idaho that faced disruptions in food supply when the pandemic hit. Conversations between Leadership Council members and the town's city clerk and local mercantile revealed that their community would be best served through a \$2,500 grant to the Idaho Foodbank. This targeted grant enabled an additional Mobile Food Pantry drop to White Bird, providing the town with a variety of fresh fruits and vegetables and other essential food items. Meeting basic human needs is fundamental to improving the quality of life for everyone, because no one in our region should have to go hungry.

RELATIVES AS PARENTS, INC.

Keeping Kids Connected

When the pandemic hit in the spring, a number of schools had to immediately shift to distance learning, and access to technology became an urgent and critical need for many students in the region. In response, Innovia granted \$2,000 in COVID-19 Response and Recovery funds to Relatives As Parents, Inc. to distribute eight Chromebooks to school-aged children in Kootenai County who are being raised by their grandparents. The grant also allowed four of the children to access online tutoring at their schools, helping them get up-to-speed on coursework missed due to the pandemic.

"This generous donation enabled us to purchase Chromebooks for students who didn't have any computers so they would be able to keep up with their schoolwork," says Glenda Weaver, Executive Director of Relatives as Parents, Inc.



"I cannot express the joy and excitement the families had when they received their Chromebooks."

- Glenda Weaver

Grants like these across the region have made an especially challenging time a little more bearable by providing the communities we love with crucial support. Our Leadership Council members have provided valuable insight and important advocacy during this crisis.



BLUE MOUNTAIN ARTISANS GUILD

Sparkling Kids' Creativity

During a summer when the pandemic significantly reduced vitally needed enrichment activities for children, a \$1,000 grant from Innovia enabled the Blue Mountain Artisan Guild (BMAG) to offer a curbside pick-up art program for youth who live in the rural wheat farming communities of southeastern Washington.

The program provided children ages 2 to 17 with take-home summer art bags that included a variety of activities such as clay modeling, drawing, painting and scratch art. As a result, kids were able to spend seven weeks with fun and enriching art projects that sparked their creativity, nurtured their boundless imaginations, and enhanced their confidence and problem-solving skills.

An 11-year-old girl from Pomeroy was among the kids experimenting with different art forms thanks to the program. She returned to the BMAG Art Center at the end of the summer with stacks of her artwork and was featured as the Junior Artist for the Fall Fantasies Art Show held in September.

IMPACT AREAS



ARTS AND CULTURE

133 GRANTS TOTALING \$413,243

Creating vibrant and accessible cultural and enrichment experiences for all.

From rural community theaters to large symphonies and orchestras, Innovia Foundation partners with nonprofit organizations that support the arts as economic drivers, educational assets and bridges between cultures.



ECONOMIC OPPORTUNITY

30 GRANTS TOTALING \$216,182

Catalyzing innovation and collaboration to support and strengthen our economy.

Whether it's providing job skills training for refugees or developing a commercial kitchen for local entrepreneurs, Innovia Foundation works with nonprofit partners to build prosperity for local families, businesses and communities.



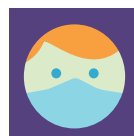
EDUCATION AND YOUTH DEVELOPMENT

390 GRANTS TOTALING \$2,236,850

Promoting success through education.

Innovia Foundation supports nonprofit organizations providing access to learning opportunities for all ages — from early childhood reading programs to college campus site visits for first generation college students.

Guided by local priorities and engaged residents, we invest in programs and initiatives that strengthen the social fabric of our region. We work to improve access to *education*, promote *health and wellbeing*, support *arts and culture*, create *economic opportunity* and enhance *quality of life*.



HEALTH AND WELLBEING

914 GRANTS TOTALING \$6,011,249

Helping people live healthier, happier lives.

Conditions in the places where people live, learn, work and play affect a wide range of health risks and outcomes. Innovia Foundation partners with nonprofit organizations to improve these conditions, known as social determinants of health, and promote wellbeing for all.

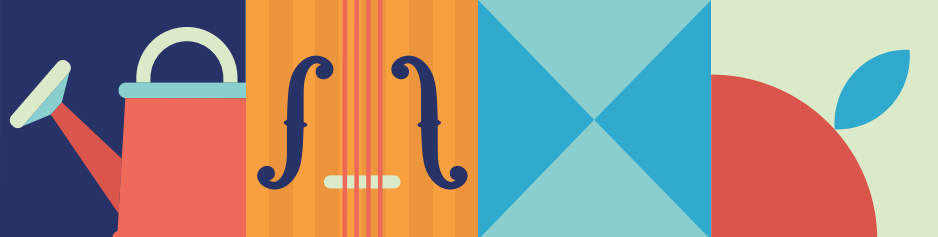


QUALITY OF LIFE

222 GRANTS TOTALING \$1,434,247

Protecting and improving what makes our part of the world special.

Innovia Foundation recognizes that land conservation, compassion for our furry friends and well-planned community spaces add so much to the quality of life we enjoy in the Inland Northwest. We love living in our region and are committed to protecting and preserving what makes our part of the world so special.



IMPACT OF FUND TYPES

We partner with generous individuals, families, businesses and organizations to establish funds that address the complex needs and opportunities in our communities. Innovia offers our donors different fund types, each with unique characteristics, that leave a lasting impact. For a complete listing of all funds, visit the “Give Now” page at innovia.org.

DESIGNATED FUNDS

247 GRANTS TOTALING \$1,594,685

TO NONPROFIT ORGANIZATIONS IN FY2020

NEW DESIGNATED FUNDS IN FY2020

- Allan Roy Designated Charitable Fund
- Robert W. & Nancy J. Benson Fund
- George & Angeline Dick Endowment Fund
- Qualchan Gardens Park Fund
- Emilie Small Grondin Fund
- Larsen Family Foundation
- Master Gardener Foundation of Spokane County Fund
- SCRAPS Hope Foundation Endowment Fund
- Big Table Endowment Fund
- Harold Balazs Creating Wonder Scholarship Fund
- Musicfest Northwest Harris Legacy Fund B Endowment
- Coeur d'Alene Symphony Orchestra Endowment
- Matt's Place Fund

DONOR-ADVISED FUNDS

865 GRANTS TOTALING \$4,141,600

TO NONPROFIT ORGANIZATIONS IN FY2020

NEW DONOR-ADVISED FUNDS IN FY2020

- Mary Nellenbach Foundation
- Heinz & Anne Zegke Foundation
- Craig & Catherine Jones Family Fund
- Jeske Family Fund
- Drennon & Gloria Adams Fund
- John T. Brewer Donor-Advised Fund
- Oakley Fund
- Trifolium Fund
- Dean & Colleen Mahoney Fund
- Moonrise Fund
- Swartley Donor Fund
- 2018 Fritz & Jeanie Wolff Fund
- Avondale Dental Group Fund
- Robert & Teresa Farr Fund
- Team Fairchild Operation Fly Together Fund
- Samuel & Jane Joseph Family Fund
- Otto Zehm Community Reconciliation Fund

COMMUNITY FUNDS

497 GRANTS TOTALING \$4,319,785

TO NONPROFIT ORGANIZATIONS IN FY2020

NEW COMMUNITY FUNDS IN FY2020

- Community Grants: Region 1 Fund
- Community Grants: Region 2 Fund
- Community Grants: Region 3 Fund
- Community Grants: Region 4 Fund
- LC Valley Small Business Recovery Fund
- End The Violence Fund
- Big Table COVID-19 Hospitality Relief Fund
- CDAIDE COVID-19 Hospitality Relief Fund
- COVID-19 Response and Recovery Fund—North Idaho
- COVID-19 Response and Recovery Fund—Eastern Washington
- William A. Crosetto Civic Leadership Fund
- Zone Expanded Learning Fund
- Say Yes to Education Fund
- Census 2020 Outreach Fund
- Disaster Response Fund
- Earl & Margery Muir Family Fund
- Tom & Robens Arts & Culture Fund
- Heath Family Fund
- Nancy Driscoll Fund

SCHOLARSHIP FUNDS

80 GRANTS TOTALING \$255,701

TO SUPPORT POST-SECONDARY EDUCATION

NEW SCHOLARSHIP FUNDS IN FY2020

- Dr. Mark Paxton Dental Scholarship Fund
- Don & Mable Nicholls Scholarship Fund
- David L. & Frances G. Ray Scholarship Fund
- Judy & Terry Davis Scholarship Fund
- Judy & Terry Davis Teacher Innovation Fund

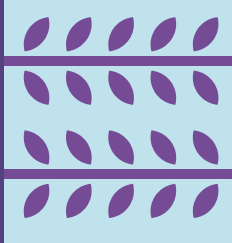
ADMINISTRATIVE FUNDS

NEW ADMINISTRATIVE FUNDS IN FY2020

- Harrington Town Square Matching Fund
- Innovia Leadership Councils & Summit Fund

We are incredibly grateful to all of our donors and fund founders who make our work possible. For a full list of funds, visit innovia.org/ways-to-give.

COMMUNITY STORIES



We believe that generosity is the most powerful source of positive change to achieve our shared goals and values.



TRI-COUNTY COMMUNITY FUND *Putting Local Dollars to Work*

"If you love your community, you need to invest in your community." Inspired by this vision, an anonymous local donor established the Northeast Washington Community Fund to meet the greatest needs of Stevens, Ferry and Pend Oreille counties for generations to come.

By expanding services that support all ages—from young children and families to older generations—the donor hopes this new fund will inspire others looking to serve the unique and changing needs of their communities. "I hope my fund empowers people to invest locally, to work together and to solve those key problems we all face."

Every donation, no matter the size, can reap big benefits for a community. Over the next 10 years, roughly \$2.6 billion in wealth is expected to transfer to the next generation in Ferry, Pend Oreille and Stevens counties. Directing just 5% of that wealth toward community giving could generate \$6 million in annual grants to the tri-county region after only five years. The ability to harness that wealth transfer and target it locally through Innovia's new leadership councils was the driving force behind this new fund.

"Locally managed and invested philanthropy is what keeps our communities healthy and whole as we move forward," the donor says.

LINCOLN COUNTY ECONOMIC DEVELOPMENT COUNCIL

Buoying Small Businesses During the Pandemic

Early on during the pandemic, the Lincoln County Economic Development Council noticed a gap in many small business grant programs under Washington's Stay Home, Stay Healthy order. Businesses that had been in operation for less than 12 months were ineligible to apply for many of the federal and statewide small business grant opportunities. Innovia moved quickly to fill this gap through a grant to the Lincoln County Economic Development Council. Businesses such as Davenport's Creekside Pharmacy, and Wilbur's Crimson & Clover Co. and The Farmhouse Kitchen & Coffee, were able to stay open and continue contributing to their communities thanks to these critical funds. Grant dollars totaling \$14,500 from Innovia and \$1,500 from the Lincoln County Commissioners are acting as life preservers for local small businesses weathering this storm.

"Creekside Pharmacy was slowly but steadily growing until COVID-19 hit," says Lanae Wiater, co-owner and pharmacist. "This grant will help us through these slower months and will allow us to move forward with education programs that we had sidelined."

DEAN AND COLLEEN MAHONEY FUND

Carrying Forward a Family Legacy of Community Activism

In the 50 years Colleen Mahoney has spent serving the changing needs of the Lewis Clark Valley, her passion for community activism has never wavered. Whether teaching elementary school, serving on the Idaho State Board of Education, helping to develop a new library, participating in human rights activism or working at the food bank, Colleen's lifelong investment in her community has been guided by the legacy of her family's values.

Colleen's passion for human rights was ignited at a young age when she witnessed the primitive and inhumane living conditions at a Japanese internment camp in Idaho during World War II. Her parents were some of the first to rent land to Japanese families

recently released from the internment camp, instilling in Colleen a lifelong respect for other people.

"We need to understand and appreciate each other," she says.

At the encouragement of her daughter, Nancy, who is a fund founder with Innovia, Colleen recently created the Dean & Colleen Mahoney Fund. The fund is dedicated to advancing causes in the Lewis Clark Valley through supporting places such as Lewis Clark State College and the YWCA Shelter for Domestic Violence Survivors.

"My life has been really wonderful, and I would like to give back," Colleen says. "I hope to leave the community a legacy of giving."

COLLEGE SUCCESS FOUNDATION

Breaking Down Barriers to Education

For underserved and low-income Spokane high school students, attending college can feel unattainable. College Success Foundation (CSF) is breaking down those barriers and providing long-term support for students as they journey toward college degrees.

CSF offers educational pathways for students from middle school through college completion. The COVID-19 pandemic created additional and seemingly insurmountable obstacles for some of those students, including Sultan, an incoming Gonzaga University freshman. Sultan was suddenly faced with the possibility of not being able to attend school because he couldn't afford books for his pre-med program. In response, Innovia awarded \$3,000 in COVID-19 Community Response and Recovery Funds to CSF to help students like Sultan overcome these new challenges.

"Sultan is a bright, kind, thoughtful young student, and thanks to the Innovia grant we were able to reassure him that all his books would be paid for and

he could continue to pursue his dream of a college education," says Shannon Demant, Regional Director at CSF. "Thank you for the many ways that Innovia has partnered with CSF to keep college a reality for our students, especially at this time."



MICHAEL CONLEY FUND

Committing to Social Justice

Michael Wayne Conley, a longstanding Spokane community member and small business owner, has always cared deeply about making the region a better place. As the longtime owner of North Division Bicycle Shop and the son of the founder of the iconic White Elephant stores, Michael's roots in Spokane run deep. When faced with a terminal diagnosis, Michael used his estate plan to establish the Michael Conley Endowment Fund, which will ensure that the organizations and causes he has long supported will receive ongoing charitable contributions for years to come. Beneficiaries of those annual donations include nine organizations in a variety of sectors, such as social service, advocacy and the environment.

But Michael also wanted his funds to have a more immediate impact, so he seeded \$50,000 in a matching gift challenge through Innovia's Community Journalism and Civic Engagement Fund to support a racial equity reporter position at The Spokesman-Review. The position is named in honor of Carl Maxey,



an influential civil rights leader and the first prominent Black attorney in Spokane. Through his estate plan, Michael's generosity, big-heartedness and commitment to social justice will continue to have ripple effects throughout the community he loves.

STORYCORPS

The Healing Power of Stories

"When we deny our stories, they define us. When we own our stories, we get to write a brave new ending."—Brené Brown

Stories not only reflect who we are as individuals and communities, they shape us as well. They help us understand ourselves, cultivate meaning in our lives, and bind us together by promoting greater understanding and revealing all the similarities we share. Recognizing the power and potential in stories, Innovia Foundation proudly sponsored a 'virtual' visit of StoryCorps to the Lewis Clark Valley during the summer of 2020. StoryCorps is a nationwide nonprofit organization that seeks to "preserve and share humanity's stories in order to build connections between people and create a more just and compassionate world."

The StoryCorps event was hosted by Northwest Public Broadcasting, which aired the stories across the (NWPB) network. Each StoryCorps interview featured meaningful dialogue between two people who know and care about one another.

One of the inspirational local stories featured Mary Jane Miles, Nez Perce tribal member and former Chairwoman of the Nez Perce Tribal Executive Committee. Speaking with her friend and colleague, Kayeloni Scott in a StoryCorps interview, Mary Jane shared that she was only two when her mother died. That tragedy was followed by a series of other difficult life events, but she persevered. She earned an education and came to terms with alcohol addiction. Her insightful conversation revealed the struggles, triumphs, opportunities and challenges encountered throughout a lifetime of learning.

Visit nwpb.org/StoryCorps to listen to local conversations and inspiring stories from the Lewis Clark Valley.

NORTHPORT COMMUNITY PRESERVATION AND RESTORATION

Reclaiming Waste, Restoring Hope

"Crisis is not too harsh a word to describe the problem of inadequate housing here at home," says Mark Harding, president of Northport Community Preservation and Restoration (NCPR), located in Stevens County, Washington. Inadequate housing and waste stockpiling are two critical problems facing members of the Northport community. Thanks to NCPR's ingenuity coupled with a \$21,000 grant from Innovia, those problems are being addressed through one creative solution: hybrid huts. Constructed from "fibrecrete," an insulative composite of reclaimed fiber, glass, tires and plastics, these huts will offer short-term housing options for those experiencing homelessness, while also making a dent in Northport's waste production.

Beyond meeting immediate needs, NCPR hopes the hybrid hut project will also improve quality of life in the long term for Northport residents. NCPR plans to operate a "Redemption Center" that offers locals a convenient place to dispose of waste that can be processed into "fibrecrete." NCPR also plans to involve those eligible for hybrid hut housing in the manufacturing process, equipping them with transferable skills for future employment.

"We believe it is vital to provide affordable housing that is also environmentally sound," Harding says. "When someone has a safe place to call home, it broadens their options and expands their opportunities."

WILLARD & PATRICIA HENNINGS MEDICAL RESIDENCY FUND

Caring for the Health of Rural Communities

Strengthening community has become a way of life for lifelong farmers and beloved Ritzville residents Willard and Patricia Hennings. In 2015, the couple established an endowed fund through Innovia that annually awards grants for local park improvements, downtown Christmas decorations, and any other updates that enhance the beauty of a city brimming with history. Additionally, in 2018, the family donated \$1 million for the creation of the Tamara A. Hennings Cancer Research Lab at the Washington State University Elson S. Floyd College of Medicine, leaving a lasting legacy for their late daughter Tamara.

This year, the couple established the Willard & Patricia Hennings Medical Residency Fund, so that more young physicians can put down roots in the rural communities the Hennings have come to know and deeply love. The new fund will expand the range of medical education programs open to medical graduates who aspire to care for the health and wellbeing of rural communities in Eastern Washington.

Funds will support the staffing of preceptors and other healthcare professionals who make these programs an enriching experience for medical graduates. Thanks to the Hennings' generosity and long-range vision, Eastern Washington communities will have access to an even brighter, healthier and more beautiful future.



WALLACE DISTRICT MINING MUSEUM

Preserving the Story of Silver Valley

The Wallace District Mining Museum is vital to the local history of North Idaho. Since 1956, the museum has preserved and told the story of the Coeur d'Alene Mining District and Silver Valley. The museum educates and entertains visitors with exhibits and documents that highlight the area's unique heritage and history of mining.

The museum is a popular field trip destination for students from Idaho, Washington and even Montana, offering scavenger hunts and other interactive learning opportunities to keep visitors engaged. The organization also supports research projects, specializes in digital archiving, provides preservation training classes and hosts the most comprehensive mining map collection outside the University of Idaho.

Innovia has donated \$15,000 in Community Grant funds to the museum to ensure that it can continue educating and enriching the public during the pandemic. The museum eventually plans to install a second floor to feature even more exhibits and collections. But for now, it remains committed to carrying forward the story of Silver Valley during this crisis.

"The Wallace District Mining Museum has a history of bringing the community together to share their story," says Museum Director Tammy Copelan. "We want all our residents to have the opportunity to carry the story of Silver Valley with them wherever they go."

MADELINE GENDREAU, RIKA REAM SCHOLARSHIP RECIPIENT

Empowering the Next Generation to Care for the Earth

When it comes to making a positive impact on her community, Madeline Gendreau is not afraid to dream big. Through the support of the Rika Ream Environmental Scholarship at Innovia, Madeline is pursuing joint degrees in Geoscience and Environmental Hydrology as a first-year student at Boise State University. After graduation, she plans to attend law school and pursue a career in writing climate legislation, combining her passions for human rights and the preservation of the environment.

"I look forward to writing climate and environmental legislation that addresses the unequal effects climate change has on disadvantaged communities," Madeline says.

Even as Madeline prepares for her future, she is helping meet the current needs around her. Whether volunteering at the local senior center, baking cookies for her community's homeless shelter, lending a hand at the library or using her background as a competitive swimmer to teach water safety skills, Madeline is committed to making a positive difference. Thanks to the support of the Rika Ream scholarship, Madeline is able to take the next step in pursuing a career devoted to service and advocacy.

"With the combined knowledge I will have in law and science, I hope to write laws that will keep the earth beautiful and habitable for generations to come," she says.

LAPWAI SCHOOL DISTRICT #341

Putting Holistic Solutions into Play

The city of Lapwai, Idaho, is located on the Nez Perce Indian Reservation and serves as the tribal government seat for the Nez Perce Tribe. Lapwai suffers from generational and situational poverty, which can wreak havoc on the physical and mental health of its residents. The town also needs facilities that proactively encourage physical, mental and social activities, which can reduce vandalism and recreational drug abuse.

The Lapwai Tennis Court Resurfacing & Pickleball Development Project is helping meet that need. Partnering with multiple community organizations including Lapwai School District #341 and the

Nez Perce Tribe, they sought to resurface three existing tennis courts by the City Park and repurpose one of those courts into two pickleball courts, creating a place for community members to come together to play sports. With the help of a \$25,000 Innovia Foundation Community Grant to Lapwai School District, they were able to turn that dream into a reality.

The centrally-located, new and improved recreational courts are bringing more people outdoors and giving them space to exercise together as a community, which has benefits not only for the body but for the mind and soul.

WATERFORD RESIDENTS FUND

Establishing a Safety Net for Elderly Residents

Increasing numbers of older Americans must face the very real fear of outliving their financial resources. Every year, at least one resident at Touchmark on Spokane's South Hill must uproot and move out simply because they have exhausted their funds. To ensure peace of mind for every resident who calls Touchmark home, the Touchmark Residents Council established the Waterford Residents Legacy Fund through Innovia. Seeded with \$1,000 from an anonymous donor, the fund hopes to reach \$500,000 in contributions. Once it meets this target, \$20,000 per year will be available to support those in the Touchmark community experiencing financial distress. Drawing from his expertise as a retired attorney, Touchmark resident Bob Patrick proved integral in bringing the fund to life.

"We wanted to do something to help residents who, through no fault of their own, found themselves in financial difficulty," Bob says.

Through an innovative fund model, applications for funding assistance will open each year, ensuring grants are distributed to the residents who most urgently need them. Existing residents are invited to take part in building the fund for the future benefit of their friends, neighbors or even themselves. The fund provides the Touchmark community with a unique opportunity to come together in establishing a safety net for all residents facing unforeseen circumstances, now and into the future.

ROGER AND MONA CRAWFORD DONOR-ADVISED FUND SUPPORTS LUMEN HIGH SCHOOL

Helping Young Families Flourish

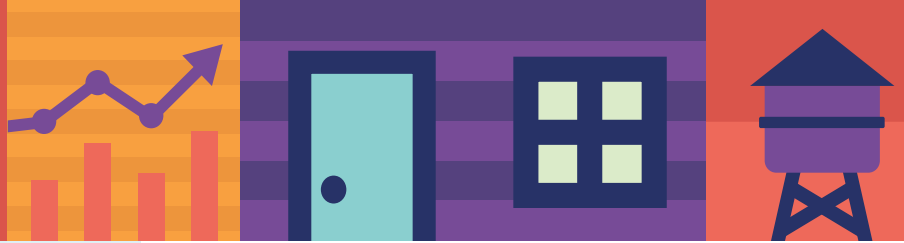
Since 2010, Roger and Mona Crawford have used their donor-advised fund at Innovia to distribute thousands of dollars in grants to local Christian ministries and nonprofits. The Roger and Mona Crawford Family Foundation is part of their plan to involve future generations of their family in nurturing a legacy of generosity. Working with their grandson, Evan Crawford Thomas, the Crawfords listed Lumen High School in Spokane as one of their grant recipients for 2020.

Lumen High School, founded by longtime nonprofit leader Shauna Edwards, is a public charter school committed to empowering teen parents by providing an early childhood learning center for their babies, as well as a safe place for students to flourish academically while they work to achieve their dream of a high school diploma. "Teen parents face so many hurdles, and the biggest gaps in services in our community are clear pathways and wrap-around services to support them in achieving their educational goals," say Edwards. The Crawfords share this passion for the plight of teen moms, and they recognized the urgency in ensuring that Lumen could open safely and on schedule for this fall semester.

Through their work with Innovia, the Crawfords and Evan learned their grant to Lumen could be coupled with the statewide All In WA matching gift initiative. Thanks to that partnership, their fund will have even greater impact in removing barriers, so that teenage parents and their babies can flourish both in and out of the classroom.



FY2020 FINANCES



SELECTED FINANCIAL INFORMATION

AS OF JUNE 30, 2019

Total assets	\$ 137,842,509
Total net assets	\$ 117,357,830
Revenue and support	
Contributions	\$ 9,807,155
Other support	4,128,301
Total revenue	\$ 13,935,456
Expenses	
Grants and program expenditures	\$ 8,985,507
Supporting services:	
Administrative	\$ 786,990
Development	137,659
Total supporting services	924,649
Total expenses	9,910,156
Change in net assets	\$ 4,025,300
Net assets - Beginning of year	113,332,530
Net assets - End of year	\$ 117,357,830

AS OF JUNE 30, 2020

Total assets	\$ 145,204,390
Total net assets	\$ 124,912,691
Revenue and support	
Contributions	\$ 19,116,542
Other support	3,222,445
Total revenue	\$ 22,338,987
Expenses	
Grants and program expenditures	\$ 13,731,613
Supporting services:	
Administrative	\$ 868,409
Development	184,104
Total supporting services	1,052,513
Total expenses	14,784,126
Change in net assets	\$ 7,554,861
Net assets - Beginning of year	117,357,830
Net assets - End of year	\$ 124,912,691

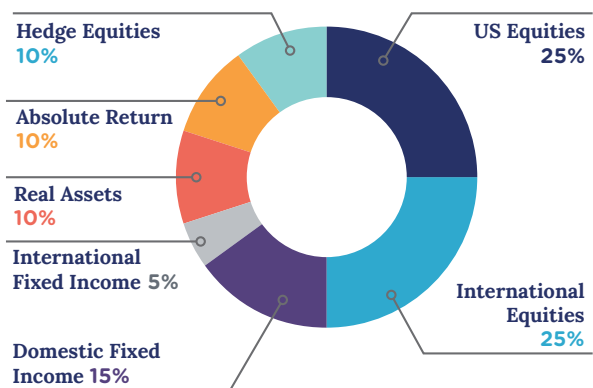
CONSOLIDATED INVESTMENT FUND

Innovia Foundation's endowed assets are pooled in a portfolio specifically designed to meet the standards set forth in the Foundation's Investment Policy Statement. The asset allocation, investment policy and performance of the pooled endowment are monitored on a monthly basis by the Board of Directors, Investment Committee, professional staff and the Foundation's external investment consultant.

INVESTMENT OBJECTIVE

The Consolidated Investment Fund has a long-term outlook. It is structured with the objective of achieving a total return in excess of the targeted spending policy, including inflation. The guiding philosophy of Consolidated Investments Fund's management is to promote the prudent stewardship of funds entrusted to Innovia Foundation to drive community transformation in the communities we serve. The Consolidated Investment Fund is broadly diversified across asset classes and investment styles in order to enhance investment returns and minimize risk.

TARGETED ASSET ALLOCATION



CONSOLIDATED FUND PERFORMANCES

AS OF JUNE 30, 2020

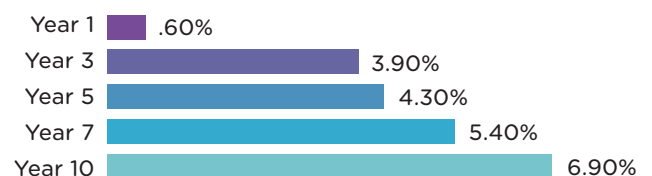




PHOTO CONTEST

We have a beautiful region.

This is why, this year, we held our first annual Vibrant and Sustainable Communities Photo Contest to show why we love living, working and playing in our part of the world. We had more than sixty images submitted, and we are delighted to share the winning images below.

1 **First Place Overall**

PHOTOGRAPHER:

Christine Bishop

LOCATION:

Lake Sans Souci



2 **Category: People**

PHOTOGRAPHER:

Renae Wedlake



3 **Category: Landscape**

PHOTOGRAPHER:

Doug Overlock

LOCATION:

Eclipse: Mica Peak Cemetery



4 **Category: Animals**

PHOTOGRAPHER:

Daryl Baird



5 **Category: Places/Spaces**

PHOTOGRAPHER:

Doug Overlock

LOCATION:

Coeur d'Alene Park, Spokane



6 **Category: Events**

PHOTOGRAPHER:

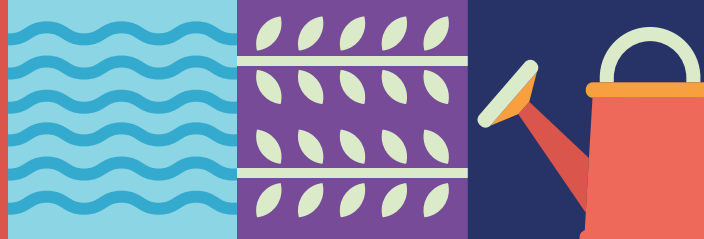
Charity Bagatsing Doyl

EVENT:

Earth Day



FY2020 BOARD AND ADVISORY COUNCILS



At Innovia Foundation, our Board of Directors and advisory committee members lend their extraordinary expertise and talent to help us improve the quality of life throughout Eastern Washington, North Idaho and beyond. These volunteers reflect the diversity of our region and work in partnership with Innovia Foundation to guide decision making, strengthen local communities, convene leaders, advise grants and leverage additional resources.

OFFICERS

Meg Miller

President

Robert A. Blume

Vice President

Geraldine Lewis

Secretary-Treasurer

Robert P. Bishopp

Immediate Past President

DIRECTORS

Janice Baldwin

Sandi Bloem

Carla Cicero

Tyler Lafferty

Robert A. Larson

Rueben Mayes

Betsy Wilkerson

Carol Wilson

GRANTS COMMITTEE

Geraldine Lewis

Chair

Janice Baldwin

Vice Chair

Terrie Ashby-Scott

Ben Cabildo

Susan Cerutti-Jensen

Gabriel Cruden

Karl Dye

Lisa Heath

Scott Hutsell

Keith Kelley

Paul Kimmell

Betsy Wilkerson

Carol Wilson

NORTH IDAHO GRANTS ADVISORY GROUP

Janice Baldwin

Terri Farr

Barbara Jackson

Carol Julian

Geraldine Lewis

Michele Magnuson

Matt Mire

Helen Muffly

Rhonda Seagraves

Jennifer Stovern

Dennis Weed

PALOUSE/LC VALLEY GRANTS ADVISORY GROUP

Francis Benjamin

Kristin Kemak

Paul Kimmell

Robin Ohlgren

Judi Pilcher

Brian Points

John Rusche

Peady Schwabe

Chris St. Germaine

Mike Waite

Anne Walsh

Donna Woolston

Rachel Young

RURAL EASTERN WASHINGTON GRANTS ADVISORY GROUP

Steven Apple

Gabriel Cruden

Ian Eccles

Aaron Edwards

Karen Giebel

Scott Hutsell

John Kragt

Darren Mattozi

Colene Rubertt

SPOKANE COUNTY GRANTS ADVISORY GROUP

Terrie Ashby-Scott

Ben Cabildo

Susan Cerutti Jensen

Lisa Heath

Tyler Hobbs

Keith Kelley

Gary Klingsporn

Amanda Swan

Betsy Wilkerson

Carol Wilson

FINANCE

Rob Blume

Chair

Tyler Lafferty

Vice Chair

Brenda Bookholtz

Bob Cole

Carmel Minogue

Chandra Schumacher

Rick Wilhite

INVESTMENT

Rob Blume

Chair

Michael Bibin

Vice Chair

Kevin Grady

Eric Green

Houston Scrudder

Marvin Soehren

Jan Tymesen

Mike Waite

GIFT PLANNING & MARKETING COMMITTEE

Sandi Bloem

Chair

Joe Dinnison

Vice Chair

Patricia McRae

Duane Brelsford

Bob Larson

Chud Wendle

Greg Bever

Marvin Reguindin

Jennifer West

William (Bill) Sperling

William (Billy) Etter

SCHOLARSHIP COMMITTEES

Scholarship committees are an indispensable part of Innovia's scholarship programs. Over 100 committed volunteers carefully review applications through the lens of their diverse experiences and local knowledge. Each ensures that scholarships are awarded in a manner that is fair and consistent with the wishes of the donors.

LEADERSHIP COUNCIL MEMBERS

Leadership Councils provide vital representation throughout Innovia's 20-county service area. Council members are trusted voices and recognized leaders in their communities, providing insight into ways philanthropy can enrich our region.

*Thank you to all of our
generous annual report sponsors.*



This is Why

She didn't have much, just some inspiration
Enough to give something back
A million lives, and generations
Young minds now back on track

Some have lost their homes, no food on the table
At the end of their rope
The hardest year, anyone can remember
But we aren't left without hope

This is why we can stand right here
We can give so much to a world full of fear
Now there's someone who isn't out of hope
We can make it through the lowest of the lows

More and more things can seem fractured
Remnants of a vibrant past
I need you now, to stand for your neighbor
We can make change that lasts

Turn on the light there's nowhere fear can hide
I'm here for you now
Everything's at stake, so many feel like they could break
But I'm here for you now

Written by Karli Ingersoll

innovia.org/thisiswhy



DONATE OR LEARN HOW TO PARTNER WITH US

innovia.org | info@innovia.org | 509-624-2606

421 W. Riverside Ave, Suite 606, Spokane, WA 99201