

2021 ANNUAL REPORT



THIS IS WHY
THIS IS
HOW

MISSION

TO IGNITE GENEROSITY THAT TRANSFORMS
LIVES AND COMMUNITIES

VISION

VIBRANT AND SUSTAINABLE COMMUNITIES
WHERE EVERY PERSON HAS THE
OPPORTUNITY TO THRIVE

AT A GLANCE NUMBERS

47

YEARS OF SERVICE

\$105M+

TOTAL GRANTS AND
SCHOLARSHIPS AWARDED
SINCE OUR INCEPTION

\$180M+

ASSETS

INNOVIA FOUNDATION TEAM

Shelly O'Quinn
Chief Executive Officer

Lauren Autrey
Chief Financial Officer

Mason Burley
Director of Research and
Community Impact

Connie Emry
Administrative Assistant

Collette Jarvelin
Program Officer

Kathy Johnson
Executive Assistant

Ellie Jones
Program Associate

Tessa Lauer
Executive Assistant
to the CEO

Meg Lindsay
Director of Education
Programs

Aaron McMurray
Chief Strategy Officer

Lauren Nissen
Associate Director
of Grants

Rachel Quick
Program Associate

Molly Sanchez
Chief Program
and Community
Engagement Officer

Chris Stiles
Director of Gift Planning
and Development

Amy Voeller
North Idaho Regional
Engagement Manager


PJ Watters Hawley
Director of Gift Planning

Lou Wilmot
Administrative Assistant

INNOVIA FOUNDATION FELLOWS

Karlee Ludwig

Katie Schiefelbein



This year, we have so much to celebrate. Through your generosity, the children of small-town Wallace have a pool to splash in next summer, rural communities are harnessing the power of data to improve student outcomes and babies born with drug-dependency in Spokane are receiving specialized treatment. These heartwarming stories are an example of the transformational work taking place every day across our region. Despite the hardships of the past months, the unwavering generosity of our donors, partners and friends has infused our lives with fresh hope and possibilities.

Together, we invested over \$39 million in our region during FY21 in grants and scholarships. Equipping firefighters, empowering refugees, enriching arts and culture opportunities, or fulfilling a student's dreams of higher education, these resources made a significant impact on issues that matter. **This is How** we are igniting generosity that transforms lives and communities.

Over 250 volunteers and Leadership Council members hailing from every corner of the region offered us their local insight and expertise. Through the lens of these valued partners, we have a clearer vision of the greatest needs and opportunities across our region. Mindful of those local needs, our Leadership Councils have championed the 5% campaign within their communities, encouraging residents to imagine the local impact of leaving just 5% in end-of-life generosity. Five of our councils established regional endowments this year, ensuring local needs are met for years to come, with locally created solutions. **This is How** we are collaborating with trusted partners to pursue vibrant and sustainable communities.

As we envision a stronger future for our communities, we are focused on better outcomes for our region's students. Through community data walks and conversations, we are inviting communities to empower students by offering comprehensive supports and scholarships. Modeled after the successful Say Yes to Education initiative, this project ties the community together because of a big and bold promise—that all students should have the opportunity and support to pursue their dreams and desired careers through postsecondary education. **This is How** we are drawing communities together to ensure every person has the opportunity to thrive.

Year after year, the gift of your partnership inspires us to uphold our mission and vision. Every initiative, heartfelt story and data point on these pages conveys the power of a shared vision for community transformation. As your community foundation, we are grateful for each and every trusted relationship and look forward to building upon the outstanding work that has taken place this past year throughout Eastern Washington and North Idaho. Joining together in generosity: **This is How** we serve our region and support inclusive, community driven efforts that make our part of the world better. We warmly invite you to join us in celebrating the lives and communities transformed by generosity and kindness.



Shelly O'Quinn
Chief Executive Officer



Geraldine Lewis
Board President

BOARD OFFICERS FISCAL YEAR 2022

Geraldine Lewis
President

Tyler Lafferty
Vice President

Rick Rasmussen
Secretary-Treasurer

DIRECTORS FISCAL YEAR 2022

Scott Hutsell

Bob Larson

Reuben Mayes

Marcelo Morales

Ryan Nipp

Sandy Patano

Jeff Philipps

Gary Stokes

Betsy Wilkerson



FY2021 GRANTS BY IMPACT AREA

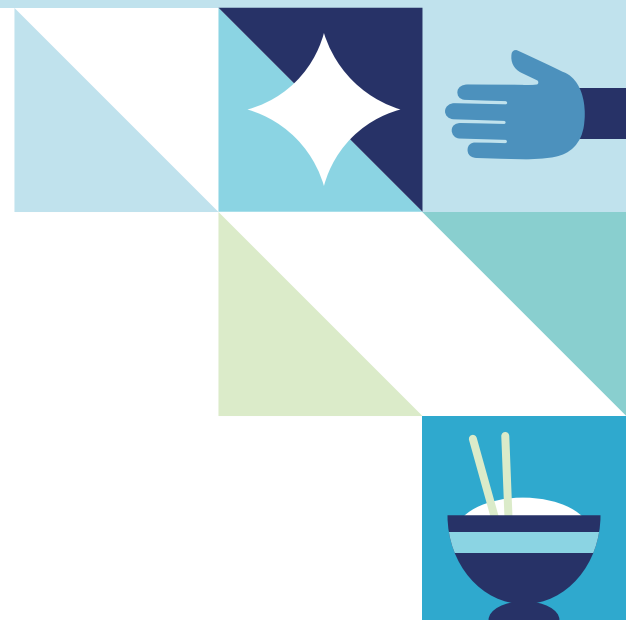


Arts and Culture	\$668,190
Education and Youth Development	\$4,474,252
Health and Wellbeing	\$4,449,479
Economic Opportunity	\$552,538
Quality of Life	\$4,045,325
Federal CARES Grants*	\$25,504,841

*Spokane County Commissioners and The City of Spokane Valley dedicated federal Coronavirus Relief Funds for small businesses and nonprofit organizations as part of the federal CARES Act. We joined Spokane County, Spokane Valley Chamber, Greater Spokane Inc. and other partners to distribute the funding.

OUR IMPACT AREAS

The needs of our communities are multifaceted and complex. We channel generosity into meaningful impact by building trusted partnerships and investing in work that improves access to education, promotes health and wellbeing, supports arts and culture, creates economic opportunity and enhances quality of life. **This is How** we build a brighter future together.





We catalyze opportunities for innovation and collaboration so our economy can grow stronger. Through our support of Spokane-based nonprofit Feast World Kitchen, local refugee chefs are cultivating the cooking and entrepreneurial skills they need to create long-term financial independence. In the process, our community is being enriched by a variety of tasty, authentic cuisine. Watch the full story at www.innovia.org/feastworld.



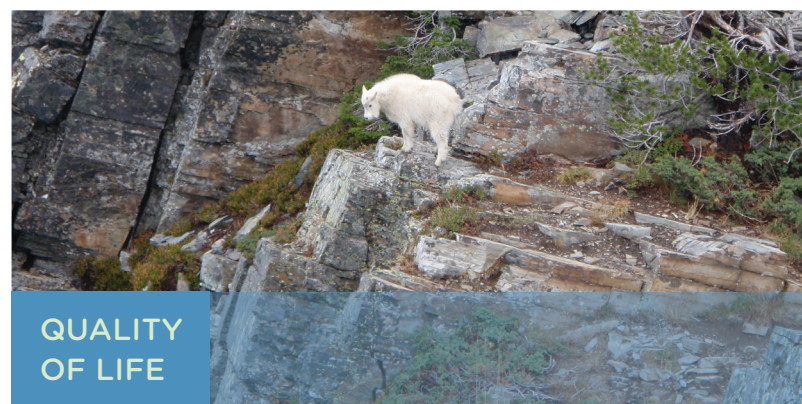
We partner with nonprofit organizations that create vibrant and accessible cultural and enrichment experiences for all. This year, Innovia provided the Coeur d'Alene Summer Theatre a grant to sustain their operations amid the pandemic, ensuring inspiring, community-building productions continue within the North Idaho region for years to come.



We work with nonprofit partners to build prosperity so that local families, businesses and communities can live healthier, happier lives. This year, Innovia awarded the Hope Street Project in Colville a grant to support their work building affordable housing units and transforming the lives of rural individuals experiencing homelessness.



We promote educational success for students of all ages. Through scholarship programs and rural community engagement, students across our region, including the 2021 graduating class of Inchelium High School, are finding access to the learning opportunities and community-wide supports they need to realize their dreams.



We are committed to protecting and preserving what makes our part of the world so special. This year, Innovia awarded Friends of Scotchman Peaks Wilderness a grant to support their volunteer Goat Trail Ambassador Program. Volunteers ensure hikers keep a safe distance from the region's iconic mountain goats, preserving the integrity of the landscape and its natural wildlife for the enjoyment of future generations.

IGNITING GENEROSITY



EQUIPPING FIREFIGHTERS, EMPOWERING COMMUNITIES

“Our whole community depends on our rural fire district,” says retired military nurse and Idaho resident, Barbara-Lee Jordan.

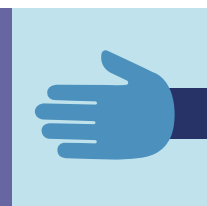
Jordan understands the threat of wildfires all too well. Just last fall, the Sunnyside Bench Complex fire encroached dangerously close to her neighborhood, forcing her to evacuate. Thanks to the relentless efforts of the all-volunteer firefighter team at the Sunnyside Rural Fire District, Jordan’s home, along with other local structures, were saved.

Since 1994, the community has relied on the Sunnyside Rural Fire District to save lives and protect homes threatened by wildfire. The immense impact of this small, volunteer-run team has not come without costs. Years of firefighting has taken a toll on the district’s personal protective equipment, some containing fire retardant that expired decades ago.

When Innovia awarded the district a \$10,000 grant for fresh equipment, the Clearwater Valley Fire District Auxiliary launched a matching gift challenge to refresh the firefighting equipment at stations across the county.

An outpouring of community generosity ensued. A local artisan stitched a quilt to raffle and a local restaurant sold mugs designed by the auxiliary. A Guns vs. Hoses fundraiser hosted by the auxiliary pitted the local police and fire departments against each other in a bowling competition. Collectively, the community raised \$4,000, enough to supply an additional five firefighting outfits.

“The community stepped forward,” says Jordan. “We appreciate what the firefighters do, and they appreciate our support.”



REVITALIZING THE WALLACE COMMUNITY POOL

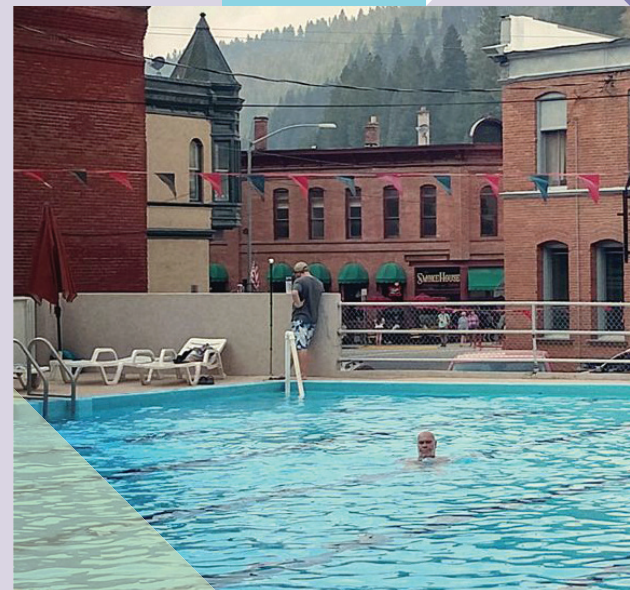
Nestled in pine forests of North Idaho, Wallace is a small town with a big personality. Emblazoned on a manhole cover in the center of the town are the words, “The Center of the Universe.” For decades, the Wallace community pool has served as an anchor in that universe.

Many Wallace residents first learned to swim in the pool, later bringing their kids for swimming lessons or summer programs. A community staple since 1939, mechanical issues caused the pool to close for the first time in 2018. Through the generosity of an anonymous donor and a matching gift challenge hosted by Innovia, the community came together to set a \$1,000,000 fundraising goal to bring the pool back to life. This was just the beginning.

As an open-air facility, decades of weather exposure took a larger toll on the pool than the Wallace community realized. Despite the funding raised for initial repairs, leaky pipes and a faulty pump forced the 80-year-old pool to close again. Through private donations, contributions from the city and persistent fundraising, the community stepped up to revitalize the pool. Selling Christmas ornaments, hosting fundraisers on social media and auctioning items at local events, the town reached its \$1,000,000 goal.

“Swimming at the pool is the primary activity for many of our youth during the summer months,” says Dean Cooper, Wallace City Council President. “The impact of this project on our town is immeasurable.”

Now fully funded, Wallace residents look forward to cooling off in the refurbished pool when it reopens next summer. Hoping to sustain the pool’s presence in the community, the town established the Wallace Pool Fund at Innovia this year. The fund will cover ongoing and future maintenance costs, and ensures the people of Wallace will be splashing, swimming and building community for years to come.





MAKING WAVES WITH JUST 5%

“You don’t need millions to make an impact,” says Aaron McMurray, Chief Strategy Officer at Innovia.

Since the release of a regional transfer of wealth study in 2019, Innovia has joined with local leaders and nonprofits in galvanizing the community around the power of giving back just 5%. The numbers are staggering: \$42 billion is expected to transfer generations in Eastern Washington and North Idaho over the next decade. While much of that wealth will go to family members and heirs, the **5% Invested, Fully Committed** campaign launched by Innovia inspires people to consider giving 5% in end-of-life generosity to their community.

“It is critical that people plan now,” says Geraldine Lewis, Innovia Board President and Sandpoint, Idaho resident. “We can all imagine and invest in the future we want for our communities.”

Just ask Valley, Washington residents and first-generation college graduates, Judy and Terry Davis. Retired from careers in social service and education, the couple established two funds at Innovia to provide local scholarships and teacher innovation awards that inspire the next generation of children to dream bigger.

For Dianne Quast and Christina Pegg, a shared passion for housing security sparked their desire to give back. After careers working for housing security organizations, the couple set aside the remainder of their estate to support housing and homelessness initiatives in Spokane.

Enriching education opportunities, opening doors to new homes, or fulfilling whatever one’s charitable passion might be, anyone can make a difference by planning now to leave 5%. When we share a commitment to support the causes that transform people’s lives, we ensure that our region will continue to be a great place to live, work and play for generations to come.



1. Judy and Terry Davis
2. Dianne Quast and Christina Pegg



RESTORING LAND, WATER AND HOPE

“We are in the forever business,” says Dave Schaub, Director of Inland Northwest Land Conservancy (INLC).

The small but mighty team at INLC diligently partners with local landowners and community organizations to ensure healthy forests, rivers and grasslands are a part of the region’s legacy for years to come. As they pursue long-term impact, INLC seeks people who are excited to share in their bold vision for the future.

Alice Clausen was a person who shared INLC’s dream of creating a vibrant environment. A lifelong resident of the Northern Palouse, Alice watched the once-pristine creeks of her family farm run brown. Captivated by the natural beauty of her land, Alice believed restoration could extend beyond the waters

and soils of her farm to the region at large. Upon her passing, Alice left a generous gift to support the outstanding work of INLC. Empowered by her generosity, INLC partnered with Innovia to establish the Northern Palouse Legacy Fund. Designed to improve the health of Alice’s land and sustain the larger work of INLC, the creeks on her beloved farm are already running a little clearer.

“Alice wasn’t a biologist or scientist by training,” says Schaub. “What she knew of the land, she learned by looking out her front window.”

Time, resources or a passion for the natural world, anyone has the tools to help preserve the vitality of the region. Any gift, even just 5%, makes a meaningful difference.



BUILDING VIBRANT AND SUSTAINABLE COMMUNITIES



CREATING STABILITY AND FOSTERING COLLABORATION IN SANDPOINT

For many hard-working people, an unanticipated event like a car breakdown, illness or accident can escalate into a crisis, particularly when access to support and assistance are not easily available. Linnis Jellinek understands that well. As Director of the Community Resource EnVision Center (CREC), Jellinek is dedicated to providing help to those in need and ensuring that the process is streamlined and accessible to all.

Backed by letters of support from community stakeholders, including Innovia, Jellinek successfully applied for designation as a U.S. Department of Housing and Urban Development (HUD) EnVision Center. It is one of 100 EnVision Centers dotted across the nation, offering a one-stop hub for those seeking support and resources in times of need. By inviting a diverse group of nonprofits to come together under the same roof, EnVision fosters coordination and collaboration among aid organizations.

As one of the few Northwest-based EnVision Centers, Jellinek and her team have transformed the building formerly known as the Sandpoint Community Resource Center into a facility equipped to meet the operational needs of 7 full-time and 25 part-time nonprofits. The designation allows the center to

receive in-kind support from HUD, while maintaining the financial flexibility needed to meet local needs as they arise. One of the partners onsite is the EnVision Media Center, and it is furnished with live-streaming and video equipment to help nonprofits achieve visibility. The center is actively recruiting nonprofits seeking to expand their impact by becoming part of the synergistic space.

"I believe transformation begins with compassion and seeing the value of each person we serve, and then inviting them into the process that can change their life," says Jellinek.

As Jellinek looks toward the future, hope and self-sufficiency are at the core of her dreams for the kind of impact the center will have on the community. An unexpected illness or accident doesn't have to spell disaster for residents of Bonner and Boundary counties living on the edge of poverty. With compassionate support and easy access to resources, the EnVision Center offers those in crisis immediate support and long-term hope. By meeting needs before they intensify, the EnVision Center aims to break the generational cycle of poverty, empowering people toward self-sufficiency that transcends every kind of barrier.



BOLSTERING COMMUNITY HEALTH

Fresh tomatoes, avocados and tortillas are just a sampling of the foods available for free at El Mercadito. Operating monthly, Latinos en Spokane stocks the market with an array of culturally relevant foods, filling an important need for the Latino community that often goes unmet by local food banks. Since the advent of COVID-19, the market has served as a trusted gathering place for locals to access more than just fresh vegetables.

With support from Innovia, organizers have partnered with local healthcare agencies to provide COVID-19 vaccinations and testing, alongside the resources already offered at the monthly market. For many in the Latino community, language barriers, financial concerns or mistrust stand in the way of easy access to vaccines and basic healthcare. With familiar faces, informational booths staffed by community activists and free access to a variety of resources, El Mercadito has become a safe space for the local Latino community to seek and receive meaningful aid, whether a vaccination or an answer to a healthcare question.

This summer, grantmaking from Innovia allowed trusted leaders from Latinos en Spokane to expand their vaccine outreach efforts beyond El Mercadito. Throughout the summer, the nonprofit hosted a variety of vaccine-centered events. To honor the long days of construction and food service workers, organizers hosted a late-night taco dinner and vaccine clinic. A “Health Day” at Comunidad Cristiana Church served to build trust, provide free health services and distribute vaccines within the faith-based circles of the Latino community.

Thanks to the outreach efforts of Latinos en Spokane and the generosity of our donors, the Latino community of Spokane is building toward a stronger, healthier future.





SPARKING STUDENT SUCCESS WITH DATA

Over half of rural high school graduates in Washington State do not pursue any type of postsecondary education in the year following graduation, greatly reducing future career opportunities.

In an effort to change the trajectory and create better outcomes for those graduates, Innovia launched a two-year initiative to strengthen school-community connections in five rural school districts: Dayton, St. John Endicott, Lind-Ritzville, Riverside and Inchelium.

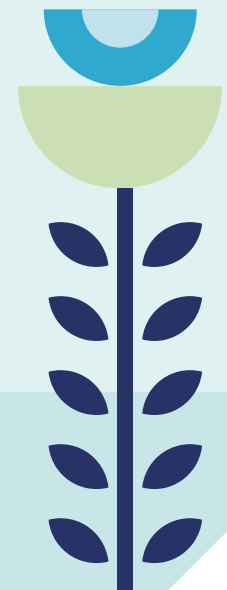
Funded by a grant from **College Spark Foundation**, Innovia is engaging with local stakeholders to lay out the type of supports they believe are needed in their community to help students be successful. A series of virtual forums were held in spring 2020. In fall 2021, Innovia hosted a series of 'data walk' sessions where participants could learn and share more about their

community challenges and student goals for college and career.

At the data walks, colorful posterboards illustrated the connection between local education trends, such as high school graduation rates, with demographic data from the five local school districts. The data walks offered each community fresh insight into the unique challenges and opportunities for their students.

"Data opens eyes," says Meg Lindsay, Director of Education Programs at Innovia. "It helps a community discover places where they can engage to provide students with a full range of supports to encourage their success."

The third forum taking place in spring 2022 will serve as a kick-off event to bolster community and school district engagement around a community driven and supported promise scholarship program.





JUMPSTARTING THE FUTURE

Now, more than ever, philanthropy must invest in organizations serving those who have been historically marginalized and underserved, ensuring they have the resources needed to reduce inequities and create thriving communities. Together with Premera Social Impact, Innovia spearheaded a \$55,000 investment in the Network for Good Jumpstart Program to increase the fundraising capacity of nonprofits serving communities of color, rural communities, people impacted by health disparities and other historically underrepresented groups within the region. This year participating nonprofits included the Carl Maxey Center, Community Resource EnVision Center, Heritage Health, Feast World Kitchen, Friends of Stonerose Fossils, Mujeres in Action and Rural Resources Community Action.

Paired with a personal fundraising coach and equipped with individualized technology support, Jumpstart helps the participating nonprofits expand their outreach and broaden their network of donors.

“Jumpstart has helped us identify opportunities to share our story and encourage potential donors to

take action,” says Ana Trusty, Program Coordinator and Policy Advocate for Mujeres in Action. “This program has really helped us jumpstart our fundraising strategy.”

As the first organization in the Spokane region dedicated to serving survivors of domestic and sexual violence within Latinx communities, Mujeres in Action saw staggering fundraising growth through their participation in Jumpstart with a 345% increase in their donation volume and a 240% increase in their donor portfolio.

Mujeres in Action is not alone. The program generated growth for nearly every participant, sustaining each nonprofit in improving the lives and communities of those they serve. Collectively, the initial \$55,000 investment in the program transformed into \$111,000 of net new nonprofit impact.

“We have much to celebrate,” says Jack Murphy, Director of Community Impact for Network for Good. “Despite numerous pandemic-related challenges, this year’s Jumpstart cohort yielded positive, and for some, transformational outcomes.”

ENSURING EVERY PERSON THRIVES



OFFERING CHILDCARE AND HOPE IN NORTH IDAHO

“The relief of not having to worry about what essentials I have to cut out or skimp on to pay childcare was huge for my family,” says one grateful parent who received an emergency childcare scholarship through a program of United Way of North Idaho.

For families around the region, the pandemic has moved quality, affordable childcare even further from reach. United Way of North Idaho was quick to respond, creating a scholarship directed toward families working or going to school that struggle to pay for childcare. Relief, hope and peace of mind were common themes expressed by families benefiting from the program. Awarded as monthly supplements to licensed childcare providers, the program gives children access to the nurturing early childhood experiences they need for future success in school.

Bolstered by a \$10,000 grant from Innovia, United Way of North Idaho expanded the reach

of the scholarship program from Coeur d’Alene to the five northern counties of Idaho. A committee of representatives from United Way and The Early Care and Education Task Force diligently reviews applications, with the goal of reducing the financial burden of childcare to 7% of a family’s monthly expenses. Overwhelmingly, recipients of these scholarships are single moms caring for 2 children and working 40-hour weeks. To date, the program has touched the lives of over 65 such families in Kootenai, Shoshone and Bonner counties.

“This scholarship has impacted my family by allowing me to go to school for a certificate that advances my career,” said one scholarship recipient. “In turn, that helps our family reach freedom from financial debt.”

By opening opportunities for both parents and children, these scholarships are resulting in a transformational effect on our region.



SUPPORTING BABIES, STABILIZING COMMUNITIES

Three-week-old Maddie was delivered to the doorstep of Tricia Hughes in 2008. Over the next months, Hughes, a foster and adoptive mother, cradled Maddie through the symptoms of withdrawal. Now a member of the Hughes family, Maddie received care and support that many babies born under similar circumstances never receive. Headed by Hughes and a dedicated team of volunteers, the nonprofit Maddie's Place strives to change that reality for babies born in Spokane, where drug-dependency adversely impacts more than 10% of all live births.

A newly acquired facility is promising to bring those dreams closer to fruition. With support from numerous partners, including Innovia, a remodel is underway, transforming a 12,000 square-foot building into a comforting space ready to provide specialized treatment, love and support for up to 170 babies each year. Once opened, the facility will become the first Pediatric Transitional Care Facility in the region and only the fourth in the nation.

As the adoptive mother of five infants born with drug dependency, Hughes deeply appreciates the importance of maternal and familial bonding for babies struggling through the symptoms of withdrawal. To meet this critical need, the facility, slated to open in early 2022, will offer 24-hour specialized care for both mothers and infants. Volunteers at Maddie's Place have seen the impact of this care model for years. When mothers are given the opportunity to bond with their babies, become familiar with their cues, and be involved in their care, they are more successful in breaking free from addiction, retaining custody of their children and having healthier future pregnancies.

"The generosity of the Spokane community and the incredible support for our mission has been one of the greatest blessings of my life," says Hughes. "We cannot wait to start caring for these precious babies."

Children born with drug dependency or affected by drugs face a myriad of long-term complications, but nurturing care in those first critical days, weeks

and months after birth can make a lifetime of difference. By caring for babies and families from birth onward, Maddie's Place is committed to making a generational investment in the children and families of our communities and changing the trajectory of their lives toward healing and hope.





CULTIVATING POTENTIAL SUSTAINING FUND

Pamela Javier never hesitates to put the needs of others before herself. Whether she is caring for her infant daughter or volunteering at a local charity, her compassionate heart and determined spirit are hard at work. As a young mother and first-generation Asian American college student, Pamela dreams of becoming a registered nurse.

“The thought of putting others before myself has not only guided me to find the career path I want in life, but it has also helped me to become the mother I am today,” says Pamela.

Despite her vision for the future, life has come with bumps and unexpected turns. When the pandemic closed daycare operations, Pamela was forced to stop work to stay home with her daughter. Chronic medical issues and tight finances posed additional roadblocks on her path toward a nursing degree.

Thanks to the generosity of an Innovia donor, Pamela is receiving the financial aid and individualized mentorship she needs to realize her dreams. Pamela is one of nine students selected to receive the first year of distributions from the Cultivating Potential Sustaining Fund, established by an anonymous donor committed to giving young people like Pamela the opportunity to discover purpose and achieve meaningful lives as they rise above challenging circumstances.

The Cultivating Potential scholarship is different from other scholarships at Innovia in that it provides

support beyond tuition assistance. All of the students in the cohort are connected to weekly meetings with a mentor and have access to emergency funding to address non-tuition needs that can often derail students on the postsecondary path.

The program is possible because of collaboration with local nonprofits and schools to identify youth with the initiative to take responsibility for their education and life. Partner organizations include Treehouse Launch Success, Lumen High School, College Success Foundation and Spokane Community College. The NextGen Zone, a program of Spokane’s Workforce Development Council, coordinates the mentorship and student support activities.

“The students of our region have so much promise, but too often they are alone in facing obstacles that disrupt their educational plans,” says Shelly O’Quinn, CEO of Innovia Foundation. “The generous donor who established this scholarship fund is committed to ensuring our Cultivating Potential recipients have a team around them for mentorship and support on their path to success.”

Through the support of the scholarship program, Pamela is forging a better future for herself and her daughter.

“All I can do is be the best role model I can be for my daughter by making my dreams of becoming a nurse come true,” says Pamela. “I want to let her know anything is possible, if she sets her mind to it.”

WE CANNOT DO THIS WORK ALONE

Our work starts with community and the hundreds of volunteers who give so much of their time and talent to the regional spaces and places they love. Together, we are committed to transforming lives and communities within every pocket of the 20 counties, two states and 40,000 square miles that make up our service region. It is only through deep community roots and local expertise of the dedicated members of our Board of Directors, Leadership Councils,

scholarship committees and advisory committees that we can live into our mission.

Through our **Leadership Councils**, we invest in relationships with community leaders, thought partners and volunteers to catalyze transformative change in our region. Our work simply cannot happen without the local voice and insight of community ambassadors. **This is How** we convene caring people to create meaningful impact.

FY2021 LEADERSHIP COUNCILS

Northeast Washington

Steven Apple
Gabriel Cruden
Aaron Edwards
Karen Giebel
Debra Hansen
Pete Lewis
Mike Lithgow
John May
Mary Rourke
Colene Rubertt
Mary Selecky
Denise Stewart

Spokane County

Adam Brigham-Althoff
Toby Broemmeling
Sara Clements-Sampson
David Condon
Chad Dashiell
Ron Douglas
Lars Gilberts
Micki Harnois
Kevin Jacka
Kristi Meyer
Gilbert Sandoval
Gene Sementi
Craig Soehren
Larry Valadez
Sandra Williams

Lincoln and Adams Counties

Shaun Cross
Ian Eccles
Scott Hutsell
Jim Kowalkowski
John Kragt
Darren Mattozzi
Richard Miller
Heather Slack
Timothy Tipton
Gretchen Youngren

Whitman and Latah Counties

Francis Benjamin
Donna Busch
Steve Busch
Jenny Ford
Glenn Johnson
Paul Kimmell
Alex McGregor
Randall Peterson
Nils Peterson
Josh Smart
Gina Taruscio

Columbia and Garfield Counties

Rachel Anderson
Ginny Butler
Trina Cole
Bette Lou Crothers
Jennie Dickinson
Meagan Hayes
Katie Leid
Sarah Meyers
Jack Peasley

Judi Pilcher
Anne Walsh

Nez Perce and Asotin Counties

Joanna Alford
Emily Ashby
Scott Corbitt
Andy Hanson
R. Kim Hartwig
Suzanne Johnson
Wanda Keefer
Kristin Kemak
Courtney Kramer
Sarah Reaves
John Rusche
Kayeloni Scott
Mike Tatko

Upper Clearwater

Joyce Dearstyne
Jason Hunter
Mary Jahn
Kirstin Jensen
Barbara-Lee Jordan
Dennis Kachelmeier
Abner King
Andrea Solberg
Chris St. Germaine
Chris Warner
Rachel Young

Shoshone and Benewah Counties

Alex Barta
Jessie Caraway
Jennifer Fletcher
Marcy Hayman

Sarah Murphy
Ashlee Myles
Rhonda Seagraves
Jennifer Stovern

Kootenai County

Jody Azevedo
Troy Braga
Charles Buck
Chris Cheeley
Amy Evans
Jim Faucher
Gynii Gilliam
Derrell Hartwick
Maggie Lyons
Rick MacLennan
Michele Magnuson
Alivia Metts
Sandy Patano
Raquel Ramage
Jan Tymesen

Bonner and Boundary Counties

Craig Anderson
Chris Bessler
Amy Encinas-Yount
Philip Hough
Carol Julian
Kimberly Manning
Andrea Marcoccio
Julie Meyer
Becca Orchard
Kelly Prior
Jennifer Stapleton
Dennis Weed
Jim Zuberbuhler

THE IMPACT OF DONOR GENEROSITY

We partner with generous individuals, families, businesses and charitable organizations to establish funds that address the greatest needs and opportunities in our communities. Innovia offers our donors different fund types, each with unique characteristics to maximize impact. **This is How**

we bridge the gap between donor generosity and community needs.

We are incredibly grateful to all of our donors and fund founders who make our work possible. For a full list of funds, visit innovia.org/ways-to-give.

COVID-19

COVID-19 Community Response and Recovery Funds: Our funds supported community based organizations in Eastern Washington and North Idaho working to serve our region's most vulnerable populations as they emerge from the pandemic. In FY21, we awarded **483 GRANTS: \$6,562,757**

Federal CARES Grant Funds: Spokane County Commissioners and The City of Spokane Valley dedicated federal Coronavirus Relief Funds for small businesses and nonprofit organizations as part of the federal CARES Act. We joined Spokane County, Spokane Valley Chamber, Greater Spokane Inc. and other partners to distribute the funding. In FY21 we helped award **2,386 CARES GRANTS: \$25,504,841**

Community: Community funds support programs and charitable causes to drive transformation in our region. In FY21, we awarded **203 COMMUNITY GRANTS: \$2,560,277**

Donor-Advised: Donor-advised funds provide the flexibility for donors to support nonprofits, schools, churches or other projects that benefit the community, in amounts they choose throughout the year. In FY21, we awarded **812 DONOR-ADVISED GRANTS: \$3,264,513**

Designated: Designated funds support nonprofits, schools or churches, year after year for generations, through annual distributions. In FY21, we awarded **257 DESIGNATED GRANTS: \$1,479,547**

Scholarship: Scholarship funds support students attending colleges, universities and vocational schools in this region and beyond. In FY21, we awarded **117 SCHOLARSHIPS: \$322,690**

FY2021 ENDOWMENT

Traditional Investment Pool
480 FUNDS:

\$158M+

Environmental, Social,
& Governance Pool
25 FUNDS:

\$3M+

Total Endowment

\$161M+

NEW DESIGNATED FUNDS

- Boys & Girls Clubs of Kootenai County Endowment Fund
- Community Minded Enterprises Fund
- Dale Dean Martin "Built Different" Memorial Scholarship Fund
- Flahaven-Gill Charitable Fund
- Generation Alive Endowment Fund
- George & Dorothy Gies Family Foundation
- Grant Adolphson Memorial Scholarship Fund
- Human Rights Education Institute Endowment Fund
- J. Herman & Jean Kaye Swartz Fund
- Jed W. Morris Charitable Fund
- Joe & Carolyn Schauble and Family Endowment for Scholarships
- Junior League of Spokane Reserve Fund
- Kelly Caldwell and Chelsey Caldwell-Eisenhauer Music Scholarship Fund for the University of Idaho
- Lee & Doris Pennell Fund
- Michael Conley Charitable Fund
- Monica Bartlett Peters Music Fund
- Northern Palouse Legacy Fund for INLC
- Palouse Habitat for Humanity Endowment Fund
- Rapid Robert Isitt Memorial Campership Fund
- Spokane International Academy Foundation Fund
- Spokane Valley Performing Arts Center Endowment Fund
- SVPAC Conservatory Scholarship Fund
- Syringa Trails System Maintenance Endowment Fund
- The Glenn E. Jefferson, MD Endowment Fund for Community Healthcare and Service Learning at the Snake River Community Clinic
- The Oaks Classical Christian Academy
- Wallace Pool Fund
- Wired2Learn Foundation Endowment Fund
- Wishing Star Endowment Fund
- YWCA of Lewiston-Clarkston Fund

NEW DONOR-ADVISED FUNDS

- Altringer Fund
- Anonymous Fund #14
- Bobbi Bild PAST Fund
- Five Mile Roundabout Art Fund
- Hawley & Crowley Fund
- J & R Brown Donor-Advised Fund
- Jed W. Morris Donor-Advised Fund
- Kelley Family Donor-Advised Fund
- Kirk and Janet Constable Fund
- Mike & Muffy Murphy Fund
- Nick Recycled Fund
- RB Pass-Through Fund
- Sarkis Family Charitable Fund
- Sonderen Charities Fund
- Spokane Community Refugee Fund

- Susan & Ken Symington Fund
- Volwiler Family Donor-Advised Fund

NEW COMMUNITY FUNDS

- Anonymous Endowed Fund #9
- Bonner and Boundary Forever Fund
- Bonner County Small Business Recovery Fund
- Confluence Community Endowment Fund
- Cultivating Potential Sustaining Fund
- Hardship Relief Fund
- Homelessness Support Fund
- Jed W. Morris Leadership Education Fund
- Kootenai Forever Fund
- Kootenai, Shoshone and Benewah Counties Small Business Recovery Fund
- North Idaho Trails Collaborative Fund for Trails Development and Access
- Northeast Washington Community Fund
- Operation Fly Together Veterans Fund
- Palouse Regional Small Business Recovery Fund
- Pine Creek Fund
- Pullman Regional Hospital COVID-19 Response & Recovery Fund
- Racial Equity Fund
- Upper Clearwater Leadership Council Fund
- Waterford Residents Legacy Fund
- Wildfire Emergency Response Fund - Eastern Washington
- Willard & Patricia Hennings Medical Residency Fund

NEW ADMINISTRATIVE FUNDS

- Broadband Access Fund
- Innovia Ignite Foundation
- Rural Education Fund



SCHOLARSHIP PROGRAMS

Communities are vibrant and sustainable when students thrive and have a clear pathway to educational success. We partner with donors around our region to offer scholarship programs that support students in pursuit of their education and career goals. More than 75 regional volunteers participate in Innovia's annual scholarship review process, carefully reviewing applications through the lens

of their diverse experiences and local knowledge. The collective efforts of these volunteers ensure our scholarships are helping students achieve their dreams while honoring the legacy of the generous donors who established scholarship funds. **This is How** we empower the next generation toward successful and meaningful futures.

FY2021 SCHOLARSHIP COMMITTEE VOLUNTEERS

Sophia Aldus
Byron Allen
Deanna Anderson
Dale Anderson
Diane Anthony
Terrie Ashby-Scott
Kim Aubrey
Susan Baker
Brett Baum
Steven Bays
Timmie Blauert
Tammy Booker
Maryann Boseth
Judy Boutain
Cheryl Bradbury
Leslie Brady
Catherine Brazil
Seth Callos
Lindsay Cink
Harold Clarke

Braden Comstock
Christina Cox
Pati Dahmen
Jane Emrick
Ben Ferney
Joanne Ferris
Aaron Fletcher
Lauren Garske
Kim Goot
Sky Griep
Duke Hammond
Larry Hardie
Larry Holter
Brent Houston
Dave Hughes
Joe Huttle
Margaret Jenkins
Buck Jessup
Nancy Johnson
Phil Kemink
Tracy Korthuis
Paul Lamb
Kathleen Law
Michael Lee
John Linch
Harry Loskill

Margaret Lowry
Brett Mackey
Jenny Mackey
Cody Marlow
Kellie Martinez
Debra Mathews
Brad Mingay
Jeralyn Mire
Sandy Montgomery
Dan More
Andra Murray
Brenda Negrete
Garrett Newbill
Jeff Norton
Jonas Parshall
Fabian Partida
Diane Paxton
Nancy Pemberton
Linda Phillips
Larry Reed
Scott Roberts
Randy Roth
Larry Sauer
Andrew Sauve
Joanne Schultz
Hillary Sims

Landry Smallfoot
Dave Smith
Todd Smith
James Staples
Kevin Swaim
Janis Tucker
Teresa Venne
Judy Wages
Lorri Williams
Emily Winebark
Jesse Zumbro

FY21 INNOVIA FOUNDATION LEADERSHIP

OFFICERS

Bob Larson
President

Geraldine Lewis
Vice President

Tyler Lafferty
Secretary-Treasurer

DIRECTORS

Sandi Bloem

Rob Blume

Carla Cicero

Reuben Mayes

Marcelo Morales

Sandy Patano

Rick Rasmussen

Bonnie St. Goddard-Rosette

Gary Stokes

Betsy Wilkerson

BOARD COMMITTEES

BOARD DEVELOPMENT

Sandy Patano
Chair

Janice Baldwin

Bill Bouten

Tyler Lafferty

Bill Simer *

Gary Stokes

Jennifer West

FINANCE

Tyler Lafferty
Chair

Rick Rasmussen
Vice-Chair

Brooke Baker Spink
Brenda Bookholtz
Bob Cole
Kris Mayhew
Carmel Minogue
Chandra Schumacher
Rick Wilhite

INVESTMENT

Robert Blume
Chair

Michael Bibin
Vice-Chair

Ron Denova

Adam Gelhausen

Kevin Grady

Eric Green

Marcelo Morales

Houston Scudder

Marvin Soehren

Michael Waite

GIFT PLANNING & MARKETING

Rueben Mayes
Chair

Greg Bever

Duane Brelsford

Katie Cox

Billy Etter

Kristin Kemak

Bob Larson

Stacy Rarrick

Marvo Reguindin

Bill Sperling

Chud Wendle

Jennifer West

GRANTS

Geraldine Lewis
Chair

Lisa Heath
Vice Chair

Terrie Ashby-Scott
Ben Cabildo
Gabriel Cruden
Scott Hutsell
Keith Kelley
Paul Kimmell
Michele Magnuson
Rhonda Seagraves
Anne Walsh
Betsy Wilkerson

GRANT ADVISORY COMMITTEES

EASTERN WASHINGTON

Steven Apple
Gabriel Cruden
Ian Eccles
Aaron Edwards
Karen Giebel
Scott Hutsell
Darren Mattozi
Colene Rubertt

SPOKANE COUNTY

Terrie Ashby-Scott
Ben Cabildo
Lisa Heath
Keith Kelley
Gary Klingsporn
Amanda Swan
Betsy Wilkerson

PALOUSE/LC VALLEY

Francis Benjamin
Kristin Kemak
Paul Kimmell
Robin Ohlgren
Judi Pilcher
Brian Points
John Rusche

Peady Schwabe
Chris St. Germaine
Mike Waite
Anne Walsh
Donna Woolston
Rachel Young

NORTH IDAHO REGION

Teri Farr
Carol Julian
Geraldine Lewis
Michele Magnuson
Matt Mire
Rhonda Seagraves
Jennifer Stovern
Dennis Weed

COLUMBIA COUNTY CHILDREN'S FUND

Jennifer Ashlock
Melissa Jensen
Ashley Kilts

INNOVIA IGNITE FOUNDATION

Shelly Bennett
Michael Bibin
Bob Bishopp
Jim Black
Rob Blume
Jeff Crandall
Adam Gelhausen
Carol Hunter
John Kragt
Denise Stewart
Tim Welsh

* non-voting
advisory member



At Innovia Foundation, our Board of Directors and advisory committee members lend their extraordinary expertise and talent to help us improve the quality of life throughout Eastern Washington, North Idaho and beyond. These volunteers reflect the diversity of our region and work in partnership with

Innovia to guide decision making, strengthen local communities, convene leaders, advise grants and leverage additional resources. **This is How** we come together to pursue innovative solutions, as the needs and opportunities of our region evolve.



PHOTO CONTEST

As we look toward a brighter future, we are reimagining our communities. Through our second annual photo contest, we invited our region to join us by capturing images of people, landscapes and animals that spark inspiration and hope. **This is How** we are celebrating the beauty and vibrancy of our communities. We are pleased to share the winning photos.



1. **First Place Overall**

Landscape and Nature
Photographer: Joanie Christian
Location: Ferry County

2. **Animals and Wildlife**

Photographer: Deb Hunsicker
Location: Scotchman Peak, Idaho

3. **Capturing the Human Spirit**

Photographer: Daniel Wilson
Location: Beacon Hill Towers, Spokane

4. **Places & Spaces**

Photographer: Joanie Christian
Location: Big Meadow Lake, Pend
Oreille County

5. **Heart of the Community**

Photographer: Joanie Christian
Location: Riverfront Park, Spokane

6. **Nonprofit Mission in Action**

Photographer: Carol Schibel
Location: Hope Meadows, Deer Park



THANK YOU TO OUR GENEROUS ANNUAL REPORT SPONSORS



DONATE OR LEARN HOW TO PARTNER WITH US

t: 509.624.2606

e: info@innovia.org

w: innovia.org

421 W. Riverside Ave, Suite 606, Spokane, WA 99201