



We envision a future where opportunity is accessible to every person. Realizing a vision that encompasses all of us requires all of us. Look no further than the pages ahead to find a snapshot of how together we can transform lives and communities. As you read, I hope you will be inspired by the passion, commitment and generosity highlighted in this issue and how it reflects WHO we are as a region and what we can accomplish when we work together.

Shag O'neil



INNOVIA
FOUNDATION



A stylized illustration featuring a blue watering can on the left, a green plant with three leaves in the center, and an orange tractor on the right. The background is a solid light blue.

PROFESSIONAL ADVISOR SPOTLIGHT: CAROL HUNTER



“TO ME, A WELL-ROUNDED, BALANCED LIFE INVOLVES STEPPING OUTSIDE OF MYSELF.”



SUMMER NEWSLETTER 2022

IGNITING GENEROSITY | BUILDING VIBRANT AND SUSTAINABLE COMMUNITIES | ENSURING EVERY PERSON THRIVES



KING COLE COMMEMORATION PROJECT (KCCP) FUND

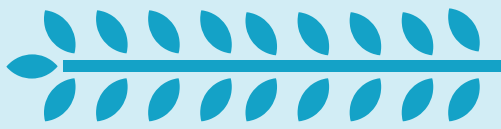
King Cole, known as the “Father of the Expo,” delivered rejuvenation to downtown Spokane, spearheading the city’s hugely ambitious bid for the World’s Fair and resurrecting the central business district. Through his extraordinary leadership and contributions from many others, Expo ’74 and Riverfront Park came to fruition, providing the Lilac City with a central jewel for generations to enjoy.

Now, as the 50th Anniversary of the Expo approaches, Friends of Riverfront Park has established the King Cole Commemoration Project Fund at Innovia to support expenses related to expanding King Cole Way. Projects include the commission of an engaging, interactive art piece and iconic gateway to celebrate Cole and other key stakeholders who made Expo ’74 and Riverfront Park a reality.

OAKESDALE COMMUNITY FUND AND HEARTS IN HARRINGTON FUND

Growing up in small, rural communities offers unique interconnectedness and support, deeply shaping the lives of people who live there. Raised in Oakesdale, Washington, Larry Stanley decided to launch the Oakesdale Community Fund in December 2021 to preserve what makes the town he grew up in so special.

to support her cherished hometown. “It’s all about what Harrington has given to me; it’s the sense of belonging, the feeling of home and support from all the people there,” Janis shares.



CHIEF JOSEPH FOUNDATION

In reaching to the past, the Chief Joseph Foundation (CJF) seeks to strengthen the future – especially for young girls and women. Based in Lapwai, Idaho in Nez Perce County, CJF will use a \$9,250 grant recently awarded by Innovia to build a horsemanship program for youth considered at risk and vulnerable.

“The idea for the program comes from CJF’s desire to stem the tide of violence directed at Native women,” according to Mario Battaglia, who helped craft the approved grant application to Innovia in tandem with CJF Executive Director Doug Marsh and the Board of Directors.

The program works to support and empower participants to become the leaders of tomorrow through transgenerational knowledge transfer between community elders and participants through horse riding instruction and skill building activities.

ORCHARD RIDGE AND WATERFORD RELIEF FUNDS

Often faced with the threat of outliving their means, a retirement community in Spokane and one in Coeur d’Alene have established funds for residents experiencing financial hardship.

In Spokane, the Touchmark Residents Council established the Waterford Residents Legacy Fund born from an anonymous \$1,000 donation nearly two years ago, according to council vice president Mark Donovan.

Ultimately, the fund’s overseers have their sights set on building a \$500,000 fund capable of distributing up to \$20,000 a year to residents in need of financial assistance.

In Coeur d’Alene, an anonymous donation of \$10,000 established the Orchard Ridge Senior Living Resident Fund to sustain the needs of residents at Orchard Ridge. Sparked by acts of anonymous generosity, these



funds ensure a lasting safety net and peace of mind for every resident who calls these senior living communities home.



FULL STORIES AVAILABLE ONLINE AT: [INNOVIA.ORG](https://www.innovia.org)

FAVORED FEW SUPPORT CREW FUND

The Inland Northwest has a long and rich history of supporting our military service members, both at home and abroad. A dedicated group of local leaders, recognizing an opportunity to further welcome active duty military and their families into our community, founded the Favored Few Support Crew Fund.

That Support Crew group, consisting of Honorary

Commanders and civic leaders, seeks to strengthen the overall quality of life of military personnel and families at Fairchild Air Force Base. Funds raised will be used to provide grants for large and small projects and initiatives that provide mental health, wellness and/or quality of life support for military personnel and their families stationed at Fairchild.



LUMEN HIGH SCHOOL FILLS NICHE FOR TEEN PARENTS

With the stresses that often come from social media and the myriad of other obstacles encountered on the path to high school graduation, the journey becomes even more daunting for a teenage parent.

It’s a large part of what motivated Lumen High School Executive Director Shauna Edwards (at left in photo below) to establish the school for teen parents. Like Shauna and Lumen’s organizers, Innovia has been a staunch supporter of the school since its inception.

“Lumen is needed because our kids just need an opportunity to shine,” says school principal Melissa Pettey. “They’ve made the courageous choice to keep and raise their child.”

In 2021, Lumen High established a fund with Innovia that will sustain its mission for years to come. The fund will advance Lumen’s work to help teen parents by providing an early childhood learning center for their children, as well as a safe place for students to thrive as they work to achieve a high school diploma.



SPOKANE JEWISH CULTURAL FILM FESTIVAL

For 18 years, Spokane Area Jewish Family Services (SAJFS) has celebrated the Jewish experience through film. As the largest Jewish cultural event in the Inland Northwest, the festival welcomes the public to enjoy and learn from the stories told on the big screen.

“Film festivals are a really accessible way to inform and cultivate empathy for the Jewish experience,” says Neal Schindler, director of SAJFS and the festival.

By connecting the public with Jewish experiences and

perspectives they might not otherwise encounter, Schindler has seen the festival challenge perceptions and spark relationships that span culture and backgrounds as the local community works to counter antisemitism.

Thanks to a grant from Innovia, Schindler hopes the festival will grow to offer a platform to a broader range of Jewish filmmakers, including those working within the region.

“There are so many aspects to celebrate about the Jewish experience,” says Schindler.

2022 COMMUNITY LEADERSHIP SUMMIT AND ANNUAL RECEPTION

In May, we held our third Annual Community Leadership Summit and Annual Reception in downtown Spokane. Attended by regional volunteers, community leaders, partners and donors to celebrate all we’ve accomplished together, the event marked the first return to in-person gathering since the inaugural Summit in 2020. In 2021, it was a virtual event.

For two days, an all-star speakers lineup featured local, regional and nationally renowned experts in the fields of academia, economics, education, journalism and philanthropy. They masterfully tied their anecdotal and empirical evidence together to illustrate attributes and characteristics of healthy and vibrant communities worth emulating.

The Summit’s first day culminated with the Annual Reception that drew more than 350 people and led to the public announcement of LaunchNW. A 20-county effort, LaunchNW is a community and economic vitality initiative to ensure every child in our region has the opportunity and support for career or college pursuits after high school.

Dozens of attendees surveyed said they left the Summit united in a shared resolve to build prosperity and opportunity for the children, families and communities of our region.



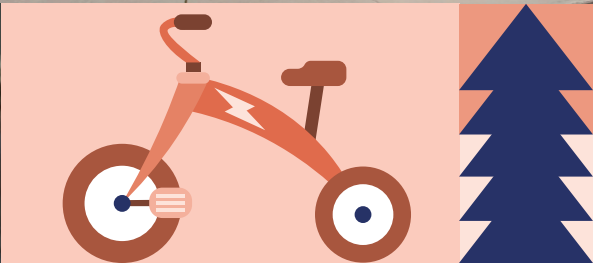
BUFFALO SOLDIERS MONUMENT HONORS SILVER VALLEY’S RICH PAST

Members of the Wallace Chamber of Commerce in Wallace, Idaho have taken great pride in the fact the city and surrounding Silver Valley once came under the protection of Buffalo Soldiers.

On June 17, the chamber and surrounding community celebrated the rich heritage of Buffalo Soldiers in Wallace with a monument dedication. The chamber, in conjunction with the Idaho Humanities Council and the National Endowment for the Humanities, placed signs at the city’s visitor center to honor the contributions of Buffalo Soldiers.

Innovia presented the chamber with a \$1,500 grant to cover transportation costs to bring participants to the gathering in Wallace from Missoula, Montana, which also hosted a Buffalo Soldiers commemorative event in June.

“It’s important to recognize those who put their lives on the line during the mining wars and the great wildfire,” said Wallace Chamber of Commerce President Brenda Johnson.





LAUNCH NW

Imagine if our entire community came together to ensure every child has the opportunity—and support—to pursue their career or college of choice and meet their full potential.

THIS IS THE BOLD PROMISE OF LAUNCHNW.

Rising costs of living. Homelessness. Workforce shortages. Generational poverty.

While local organizations have made progress on these issues, we must work together to effectively address underlying causes.

Post-high school education and career training is critical to creating

prosperity and disrupting cycles of poverty, but it feels out of reach for many of our students and families. Four in 10 high school graduates in our region aren't pursuing post-secondary opportunities.

We need to change that.

LaunchNW brings the community together to invest in comprehensive solutions that spark lasting community vitality.

Your investment in LaunchNW disrupts siloed systems to create opportunities, prosperity and growth.

LaunchNW is a bold, cross-sector collaboration that catalyzes community prosperity

by integrating student and family supports from cradle to career. It brings together regional partnerships to develop holistic solutions to the issues our region is working to solve.

With a supported promise of scholarship as incentive, LaunchNW brings community organizations and support services to the table, using data to realign resources to better serve students and families. The scholarship also provides hope that finances are no longer a barrier to post-high school opportunities.

Scholarship funding by individuals, businesses and foundations creates positive community incentive for organizations and service providers to remain engaged.

Together, we will improve the trajectory of our communities for decades to come.



Goal:

Class of 2024 high school graduates will be the first recipients of the LaunchNW promise scholarship

LAUNCHNW CREATES OPPORTUNITY FOR CHILDREN AND FAMILIES.

One in three people in our region are economically insecure. As a result, our entire region is impacted. Individual income levels are lower, skilled workforce needs are unmet and the cost of living outpaces wages.

LaunchNW brings together community partners to ensure every child, regardless of their individual circumstances, has access to career training: apprenticeships, technical and two-year degrees, credentials, four-year degrees and beyond.

LAUNCHNW BUILDS PROSPEROUS COMMUNITIES.

Communities in the U.S. with programs similar to LaunchNW have seen increases in post-high school education, volunteering, community service and voting, paired with decreases in

unemployment, reliance on government assistance programs, and government spending on remedial services and interventions.

LaunchNW has garnered investment and support from regional corporate leaders, philanthropists, school districts, higher education, individuals, nonprofits, and members of city and county governments.

LAUNCHNW SPARKS ECONOMIC GROWTH.

Education and workforce training are vital to ensuring our region can create and fill the jobs we need to grow and prosper. Within five years, 70% of projected job openings in our area will require at least some form of education or training beyond high school.

Employers in Eastern Washington and North Idaho want to hire local talent. Investing in post-high school opportunities and workforce training ensures

students are prepared for, and have access to, jobs in our region.

Building the talent and potential of young people not only grows our local workforce, but also increases household income and job growth, leading to a stronger economy.

THE TIME TO ACT IS NOW.

We have an incredible opportunity to leverage the unprecedented amount of state and federal dollars currently available in our region for pandemic recovery. Your contribution adds to the momentum and advances the work already underway.

Join us in this once-in-a-generation opportunity to create transformational change.

Make a contribution today at LaunchNW.org.

